



Welcome to the 2022 IPSS Graduate Student Orientation

16 August 2022

Integrated Plant & Soil Sciences Graduate Student Orientation

Covering Graduate Degrees In The
Following Disciplines:

Crop Science
Environmental and Ecosystem Science
Horticultural Science
Plant Biology and Biochemistry
Soil Science

Welcome!

This Orientation is designed to:

- **Introduce Newcomers** to the 'Ins' and 'Outs' and 'Dos' and 'Don'ts' of graduate school at UK and people who can help you get things done
- **Remind current Graduate Students** of rules and regulations
- **Remind Graduate Faculty** of what their graduate students are supposed to know



Welcome to New IPSS Graduate Students who started in Spring 2022



Alec Besinger



Danielle Doering



Hayden Love



Sara Lind
Valdimarsdottir



Xia Wu

New IPSS Graduate Students starting their Fall term in 2022



Hans Brown



Gavin Saunders



Robert Nalley



William Fleming

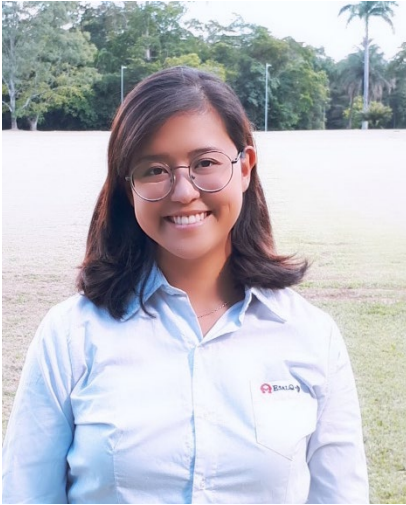


William Rich



Lauren Seltsam

New IPSS Graduate Students starting their Fall term in 2022



Letícia Pacheco
Inoue



Eric Luteyn



Yifei Wang



Conner Raymond



Kinsey Hamby

Schedule of Today's Events

9:00a – 9:15a	Greetings and Sign-In
9:15a – 10:15a	Graduate Study in Plant and Soil Sciences Who's who? What's what? Introduction to Graduate School and IPSS (1)
10:15a – 10:30a	Coffee and Refreshments
10:30a – 10:45a	GSA Introduction – Sara Qian, Paul Cöckson
10:45a – 11:45a	Introduction to Graduate School and IPSS (2)
11:45a – ?	Lunch – Everybody is invited! Organized by our IPSS Graduate Student Association in PSB Courtyard if weather is permitting, otherwise: PSB Lobby; food is provided; social time Student pictures and bios

The University of Kentucky Graduate School



- You are all members of the Graduate School
- Graduate School Administration is located in the Gillis Building on Central Campus (next to The Main Building)
- Acting Dean is Dr. Martha L. Peterson



The most Up-to-Date information is found on The Graduate School's website

Including, but not limited to:

- Graduate School Bulletin
- Graduate School Forms
- Student Support

The Graduate School


myUK

ABOUT US | PROSPECTIVE STUDENTS | CURRENT STUDENTS | STUDENT FUNDING | PROFESSIONAL ENHANCEMENT | FACULTY AND STAFF RESOURCES

THE GRADUATE SCHOOL

Offices of The Graduate School

Admissions & Recruitment




Thinking about Graduate School? Research our [graduate programs](#), view the minimum requirements for admission to the Graduate School [here](#), and start your application by clicking on the link below.

...

[APPLY](#)

[Read More](#)

Finance, Funding, & Analytics




The Office of Finance, Funding, & Analytics strives to promote student success and high quality of graduate programs by applying student financial aid, facilitating assistantships and fellowships, performing budgetary accounting and data analytics, and much more.

...

[Read More](#)

Professional Enhancement




The Office of Professional Enhancement works to bolster students' success in both their academic and work life by offering events and services such as Thesis/Dissertation Writing Camps, seminars, conferences, workshops, and cultural events.

...

[Read More](#)

Academic Services



The Academic Services and Records office provides academic support and services to graduate students, maintains student records and degree completion policies and procedures, and more.

...

[Read More](#)

<http://www.gradschool.uky.edu/>

[Home / Current Students / Graduate School Bulletin](#)[Current Students](#)[Bulletin](#)[Key Dates](#)[Degree Forms](#)[Student Forms](#)

Graduate School Bulletin

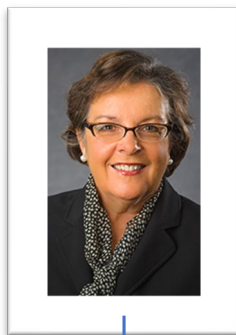
[2020-2021 Graduate Bulletin](#)[Graduate Bulletin - Graduate Certificates](#)[College of Agriculture, Food & Environment](#)

Student Responsibility

It is the student's responsibility to be informed concerning all regulations and procedures required by the course of study being pursued. In no case will a regulation be waived or an exception granted because a student pleads ignorance of the regulation or asserts that information was not presented by advisors or other authorities. Therefore, the student should become familiar with the Graduate School Bulletin, including 1) the section presenting the requirements for degrees and 2) the specific program offerings and requirements.

<https://gradschool.uky.edu/graduate-school-bulletin>

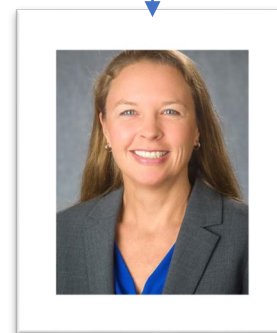
College of Agriculture, Food, and Environment (CAFE)



Dr. Nancy Cox
Dean



Dr. James Matthews
Assoc. Dean for Research



Dr. Carmen Agouridis
Assoc. Dean for Instruction

Department Chairs



Rebecca L. McCulley
Plant & Soil Sciences
<https://pss.ca.uky.edu/>



Jeff Stringer
Forestry and Natural Resources
<https://forestry.ca.uky.edu/>



Mark Williams
Horticulture
http://www.uky.edu/Ag/Horticulture
/

Director of Graduate Studies (DGS) Integrated Plant and Soil Sciences



Ole Wendroth
N-122M Ag Science North
(859) 257-4768
owendroth@uky.edu

IPSS Steering committee



Chair:

Dr. Erin Haramoto

Members:

Dr. Ole Wendroth (DGS)

Dr. Bruce Downie (Hort.)

Dr. C.L. Rodriguez (Hort.)

Dr. J. Unrine (PSS)

Dr. Yang (FNR)

Dr. J. Stallins (Geography)

Sara Qian (President GSA)

Lichun Zhou (Student-At-Large)

Department Information



Note that you should be familiar with the office staff from your advisor's department.

Plant & Soil Sciences Front Office Staff



Suzette Walling
Department Manager
PSB 105
(859) 218-0793
s.walling@uky.edu

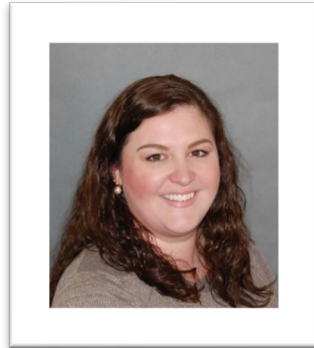


Jessica MacLeod
Human Resources Manager
PSB 105
(859) 218-0709
jessica.macleod@uky.edu

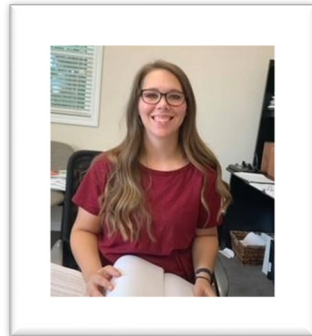


Stacy Underwood
Administrative Assistant
Travel, Reservations,
Announcements
PSB 105
(859) 218-0742
stacy.underwood2@uky.edu

Plant & Soil Sciences Business Office Staff



Lauren McMahan
Business Officer
PSB 320
(859) 218-0710
Lauren.mcmahan@uky.edu

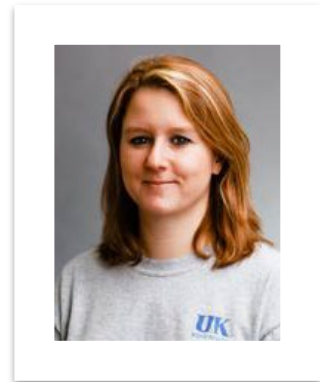


Emily Hill
Purchasing Specialist
PSB 320
(859) 218-0711
emily.hill@uky.edu

Plant & Soil Sciences Staff



Emily Dorward
Manager
Soil and Plant Analysis Lab
Ag. Sci. North
(859) 25
erdorward@uky.edu



Sara Carter
Spindletop Farm Coordinator
Chair Farm Safety Committee
Office: Weeds Lab, Agronomy Field Lab,
North Farm
(859) 259-1914
sara.carter@uky.edu

Horticulture Office Staff

Jaclyn Gibson

Business Officer and Human Resources

N-318D Ag. Science Center

(859) 257-7293

jaclyn.gibson@uky.edu

Cortney Decker

Procard and Purchasing

N-318E Ag. Science Center

(859) 257-1601

dstephens@uky.edu

Jessi Jump

Travel and Administrative Support

N-308 Ag. Science Center

(859) 257-3784

Jessi.Jump@uky.edu

<http://www.uky.edu/hort/People>

Certifications, Operations, Protocols, & Facilities

Various faculty/staff committees are responsible for farm safety issues and classes, field or greenhouse use, pesticide application, etc. These committees are specific to your advisor's department.

Contact chairs of specific committees for further details.



Plant & Soil Sciences Committee Chairs



**Spindletop Facilities
& Farm Safety**
Sara Carter
sara.carter@uky.edu



Farm Pesticide Use/Oversight
J.D. Green
jonathan.green@uky.edu



Greenhouses
Mike Barrett
mbarrett@uky.edu



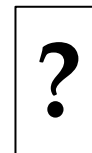
**Campus Facilities
& Management**
Jim Nelson
jim.nelson@uky.edu



**Equipment Coordinator, Federal
Excess Liaison/Surplus**
Bill Bruening
bruening@uky.edu



Spindletop Land Use
Bob Pearce
rpearce@uky.edu



**Laboratory Safety
Emergency Response**
?

Official Vehicles

- Most vehicles are assigned to projects.
- Some vehicles are shared by multiple faculty.
- Plant & Soil Sciences has one vehicle (an SUV) that can be reserved and checked out online for temporary local & farm use. **This is available to students with advisors in the PSS department only.**
- An approved travel request is needed before any UK vehicle can be officially taken out of Kentucky.

Rules for State & University Vehicles

You Need:

- A valid operator's license.
- A completed Motor Vehicle Record Release form.
- At least 5 years driving experience.
- No health problems that limit or restrict driving.
- No more than two at-fault accidents in the past 3 years.
- Driving privileges are reviewed at 6 deficiency points.
- 15 passenger van drivers need training and certification.

Gate Access Card

Farms are gated. You will need a photo ID gate card for access. Ask your supervisor to request gate access for the various farms.

Forms can be completed with your department's office staff.



Research & Research Responsibilities



On-Campus Facilities



Plant Science Building
Plant Biology
Crop Science
Turf Science
Horticulture: Plant Biology



Kentucky Tobacco Research and Development Center (KTRDC)
Physiology & Biochemistry



Agricultural Science Center
Soil Science

Horticulture: Production
Grassland/Range/
Forage Science



Regulatory Services Building
Soil Testing

Seed Technology



Seedhouse-Greenhouse Complex



Thomas Poe Cooper Building
Forestry and Natural Resources

USDA - ARS

Forage Animal Production Research Unit (FAPRU)

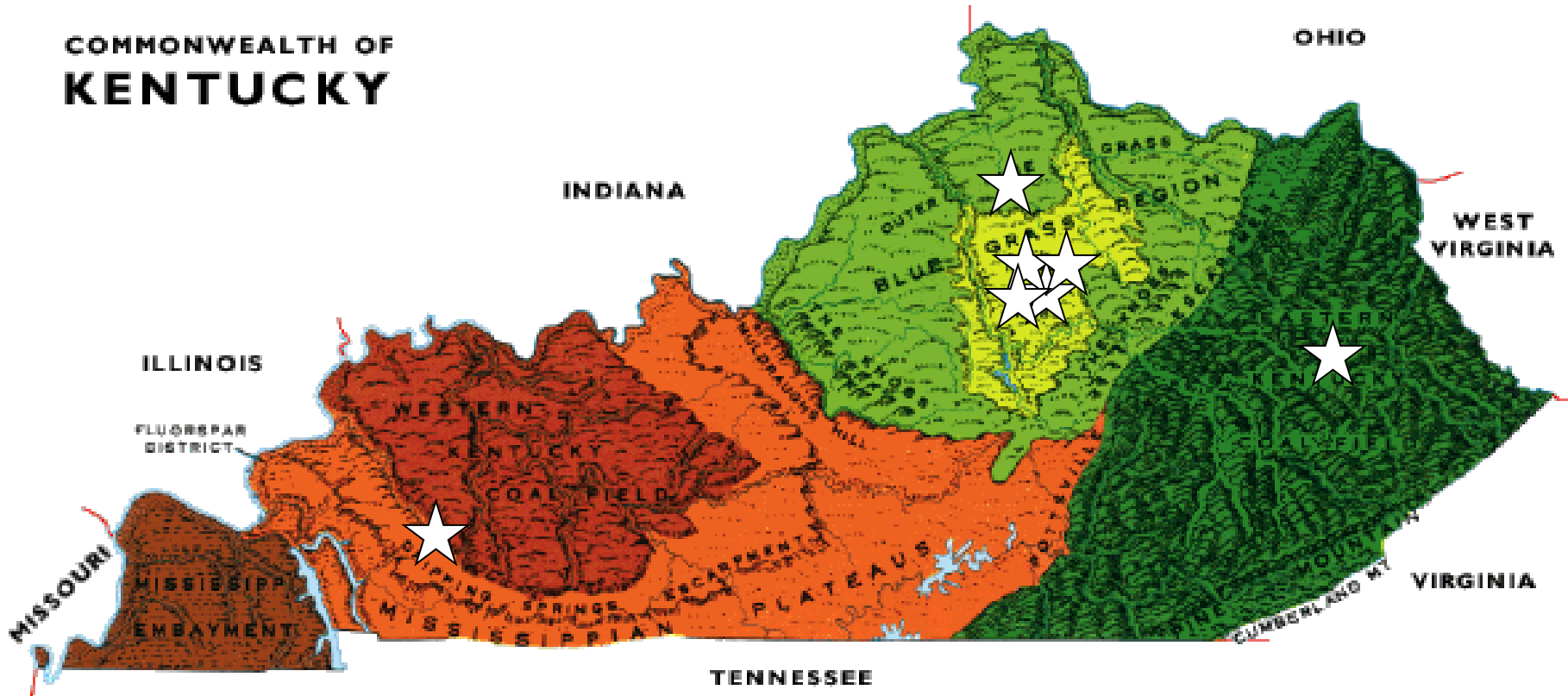
Located in Ag. Sci. Center 2nd floor
Several USDA scientists belong to our graduate faculty

If you will work in
a USDA-ARS lab
you will also need
a USDA ID



Michael Flythe
Research Leader
Michael.Flythe@ars.usda.gov

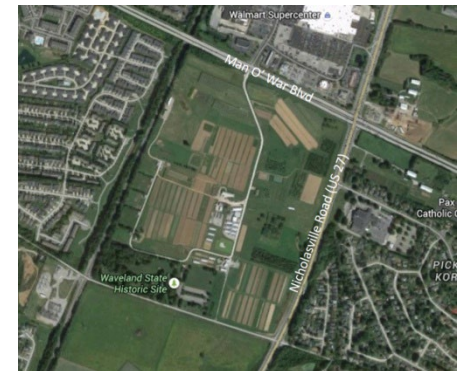
COMMONWEALTH OF KENTUCKY



Research Station Farms

Off-Campus Research Facilities

- Kentucky Agricultural Experiment Station Research Farm (Fayette Co.)
aka Spindletop, Maine Chance
- Oran Little Animal Research Center (Woodford Co.)
- Western KY Research and Education Center *aka* Princeton (Caldwell Co.) *aka* Center for Forage and Grain Crops Excellence
 - Including Graduate Student House for extended research visits
- Robinson Center for Appalachian Resource Sustainability (Quicksand KY)
- South Farm (Horticulture, Sustainable Agriculture)



Note: For the purposes of UK's 'Tobacco-Free Campus' these research sites are considered 'smoke-free.'

Working in Princeton?

UKREC (Research and Education Center, and the Grain and Forage Center of Excellence)



Your WILDCARD can become your key!



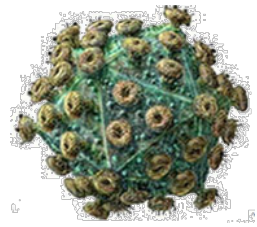
Certification is required if you work in a UK lab:

1. Chemical Hygiene Plan/Laboratory Safety
2. Hazardous Waste Management
3. Fire Extinguisher Use
4. Radiation Safety
5. Others as required

Online classes: <http://ehs.uky.edu/classes.html>

Ask your lab supervisor who might approach you for submitting your safety certifications for the lab folder (lab inspection)

Institutional Biosafety Committee



Any research involving infectious agents, potentially infectious materials, or recombinant nucleic acids must be registered with the Institutional Biosafety Committee as established by University of Kentucky policy and the NIH. Because the University receives NIH funding, **ALL RESEARCH conducted at the University must comply with the NIH Guidelines for Research Involving Recombinant DNA Molecules and University policies.**

Biohazardous materials considered worthy of registration may include, but are not limited to:

Infectious agents (viral, bacterial, fungal, parasitic, or prion)

Recombinant nucleic acids (ex: plasmids with inserts, viral vectors, etc. or whole animals and plants with introduced recombinant materials)

Infected animal blood and/or tissues

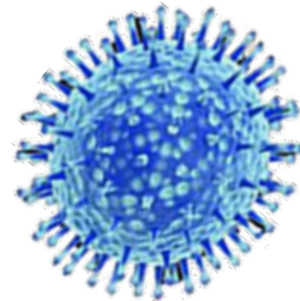
Human blood, blood products, or fluids

Infected animal blood and/or tissues

Human blood, blood products, or fluids

Human derived cell lines or tissues

Live vaccines



If you are uncertain whether material you are using in your research qualifies as biohazardous, please contact the University of Kentucky Department of Biological Safety at ehsbiosafety@uky.edu or call 859-257-8655.

Ask Your Research Advisor if Your
Research is Registered - or Needs To Be
Registered - With IBC To Remain
Safely in Compliance.

<https://ehs.uky.edu/>

Human and Animal Research Subjects

All research involving animals must be covered by an approved IACUC protocol.

All individuals involved in animal care, treatment, and use, must be qualified to perform their duties.



IACUC: Institutional Animal Care and Use Committee



Graduate Student Resources, Rights & Responsibilities

The IPSS Graduate Student Handbook



Home Prospective Students Current Students Academic Calendar Student Directory Graduat
Symposium Awards Handbook

<https://ipss.ca.uky.edu/>

<https://ipss.ca.uky.edu/2021-ipss-handbook>



The IPSS Program provides students with:

- a dynamic environment tailored to suit the needs of current and future graduate students in the plant and soil science disciplines
- an interdisciplinary curriculum and research opportunities that are responsive to developing scientific trends in agricultural science
- concentrations (M.S.) and specializations (Ph.D.) in Crop Science, Plant Physiology, Horticulture, and Soil Science

Graduate Student Academic Staff (GSAS) Notice of Appointment (Contract)

Issued twice a year (Aug. – Dec. & Jan. – July)

GSAS will indicate stipend, tuition, health benefits, and other conditions of employment

MS: Limited to three years

PhD: Limited to four years

Annual renewal is subject to “good progress”

Graduate Research Assistant Setup Requirements

I-9 Employment Verification Forms

W-4 Tax Forms: Federal, State, Local

Payroll: Mandatory Direct Deposit in Bank

PSS/Hort/For records: address, partner, etc.

Acceptance of GSAS forms (per semester)

The I-9 form is a Federal requirement for employment in the United States for which individuals provide documentation establishing both identity and employment eligibility.

PSS Contact:

PSB 105
Jessica MacLeod or successor
(859) 218-0709

Horticulture Contact:

Jaclyn Gibson
N-318D Ag North
jaclyn.gibson@uky.edu
(859) 257-7293

Student Code of Conduct

Code of Student Conduct: Rules, Procedures, Rights and Responsibilities
Governing Nonacademic Relationships

UK Campus is tobacco*, drug, and alcohol** free

All employees are subject to a criminal background check



<http://www.uky.edu/studentconduct/code-student-conduct>

* This includes University vehicles

** Exceptions include sanctioned events at Kroger Field (i.e. tailgating), Good Barn, and the Faculty Club

NOTE

With your GSAS contract and your assistantship or fellowship you have a dual role.

You are a student in the graduate program and you are an employee of the university.

Thus, you are responsible for both the student rules and the university employee regulations.



Full-time Research Assistantships/Fellowships

Full-time: 9 credit hours per semester

Work hours: 8:00 am to 5:00 pm Monday to Friday
(Consider these as guidelines)

Stipends paid biweekly by direct deposit to your bank.

20 hours per week is assignable by your advisor.

No other salaried jobs are allowed without permission.

Vacation: Negotiable with your supervisor.

For tax liabilities, see Jessica MacLeod, Main Office(PSS) and Jaclyn Gibson (Hort)

Official Holiday Announcement 2022 – 2023

The University of Kentucky observes the following holidays, except where continuous service is essential, in accordance with University of Kentucky Human Resources Policies and Procedures

Holiday	Date observed	Day observed
Independence Day***	July 4, 2022	Monday
Labor Day	September 5, 2022	Monday
Thanksgiving Day	November 24, 2022	Thursday
Day after Thanksgiving*	November 25, 2022	Friday
Christmas Day	December 26, 2022	Monday
Special Holidays/Bonus Days ** To receive the Special Holidays, you must be employed in a regular position on or before <i>October 25, 2020</i> .	December 27, 2022	Tuesday
	December 28, 2022	Wednesday
	December 29, 2022	Thursday
	December 30, 2022	Friday
New Year's Day	January 2, 2023	Monday
Martin Luther King Jr. Day	January 16, 2023	Monday
Memorial Day	May 29, 2023	Monday
Juneteenth****	June 19, 2023	Monday
Independence Day	July 4, 2023	Tuesday

* The Day Before Thanksgiving, and Spring Break, are not Official University Holidays for Employees.

UNIVERSITY OF KENTUCKY NON-DISCRIMINATION STATEMENT

The University of Kentucky is committed to a policy of providing educational opportunities to all academically qualified students regardless of economic or social status and will not discriminate on the basis of race, color, ethnic origin, national origin, creed, religion, political belief, sex, sexual orientation, gender identity, gender expression, pregnancy, marital status, genetic information, age, veteran status, or physical or mental disability.



UK will not discriminate against anyone – even you!

As a globally engaged public research university, UK welcomes students and scholars from around the world.

Our faculty, scholars and students from particular countries, e.g., China and Russia are currently facing particular stresses.

They are, understandably, feeling anxious given the issues and concerns being raised – from ongoing national security concerns related to foreign government influences in academic research, to actual and rumored changes in U.S. immigration policies and the rising anti-nation sentiment in the face of global health threats and wars.

No one should feel they are being regarded with suspicion or excluded from a project based on their national origin. You can find out more about UK's commitment to research integrity [here](#).

COVID-19 and wars have helped foster negative reactions that have stigmatized and targeted certain groups. We must all recognize the deep hurt and harm this can create for those who are targeted in this way, and we must all recognize how discriminatory actions hurt UK as a whole.

It is on each of us to speak out and stand up if we witness any such behavior by reporting any such incidents to the [Office of Institution Equity and Equal Opportunity](#).

Issues of Discrimination
and Harassment Are Taken
Very Seriously

University of Kentucky Discrimination and Harassment Policy AR 6:1, HR 2.0

The University of Kentucky, in its efforts to foster an environment of respect for the dignity and worth of all members of the University community, is committed to maintaining an environment free of prohibited **discrimination**, which includes sexual and other forms of **harassment**. Discrimination and harassment are prohibited between members of the University community and **shall not be tolerated**.

Procedures

A complaint of discrimination or harassment may be initiated by contacting any:

- Dean
- Director
- Faculty Member
- Department Head
- Manager
- Supervisor
- Any individual with supervisory or administrative authority

These Individuals Are Obligated by Law to Report Any Incident to the Appropriate Authorities

Acts From Which Every Member of the University Community Are Prohibited:

- Sexual or racial harassment
- Making intentionally false accusations
- Retaliating against a complainant or any individual who participates in an investigation

Violation of these restrictions is enough to be terminated from the University and has been used to remove employees from the University.

Personal and Property Security

Large open campuses are susceptible to crimes of opportunity and crimes of intent. Buildings are now locked after hours (*ca* 5:00 pm) and on weekends.

Secure your personal and UK property: lock your office, labs, and cars when you are absent.

Ensure that computers, especially laptops, are protected and secure.

Secure your data!

Be careful after hours.

UK has a '911' system.

UK police:
from cell phone #UKPD
from land line 257-1616

Ag Security:
(859) 257-4637 (office)
(859) 509-2957 (cell)

Graduate Student Offices

Desk Space in Labs is Assignable by Your Research Advisor

A Limited Number of Offices and Desks Are Available To Graduate Students. They are Assigned on a 'First Come – First Served' Basis With Priority Given to PhD Students and Students with TA Responsibilities

For Students With an Advisor in
Plant and Soil Sciences:

PSB (3rd Floor) – Carol Von Lanken
PSB (4th Floor) – Mike Barrett
ASN (1st Floor) – Ole Wendroth
ASN (2nd Floor) – Jim Nelson

For Students With an Advisor in
Horticulture:

See **Jaclyn Gibson** or your Advisor

Familiarize Yourself With Your Laboratory's
Building Emergency Action Plan (B.E.A.P) Including
Where to Assemble and Who to Notify.

Fire alarms can mean real fires!



Advisory Committees

Most of you have selected the chair of your Advisory Committee. It is your Research Advisor.

With your Advisor, select the other members of your committee as soon as possible (hopefully by the end of your first term).

Meet with your committee to create a plan of study and draft plans for your thesis or dissertation research. Complete the degree plan form and return it to the DGS.

Meet with your committee annually (more frequently if necessary).



Graduate Students are Responsible for:

Their graduate career

Recording and security of research data

Rate of progress

“Housekeeping”

Completing forms

Meeting deadlines & milestones

Attending seminars (this is a professional expectation)

From the Graduate bulletin:

Student Responsibility

It is the student's responsibility to be informed concerning all regulations and procedures required by the course of study being pursued. In no case will a regulation be waived or an exception granted because a student pleads ignorance of the regulation or asserts that information was not presented by advisors or other authorities. Therefore, the student should become familiar with the Graduate School Bulletin, including 1) the section presenting the requirements for degrees and 2) the specific program offerings and requirements.

The Director of Graduate Studies in the student's major program should be consulted concerning course requirements, any deficiencies, the planning of a program, and special regulations. Programs may have degree requirements that are not listed in the Bulletin. It is to be noted that the Dean of the Graduate School interprets the Graduate School Bulletin. Only the Graduate Council may waive requirements stated in this Bulletin.

You Will Periodically Get Messages from The Graduate School
About New Rules and Deadlines For Each Term

These Notices Come Through Your xxx@uky.edu Accounts

Make Sure You Check Them or Forward Them to your regular e-
mail account

Make sure you are on the following listserve

IPSS-GRAD@lsv.uky.edu

Contact Ole Wendroth (owendroth@uky.edu) or **Suzette Walling**,
s.walling@uky.edu to be placed on the relevant listserv

IPSS Requirements

All students in IPSS must take:

- PLS 772 - Seminar
- IPS 610* – Communication in IPSS
- IPS 625 – Research in IPSS
- Either Take or Demonstrate You Have Taken One Graduate Level Statistics Course

To Be Most Useful, IPS 610 and IPS 625 Should be Taken
During Your First Semester at UK

*Alternative GS courses are available for students with a proven record of proficiency.



Symposium/Seminar Requirements

- Each student is expected to present at least once during the research symposium or at least once annually on campus
- Each student is required to enroll in PLS 772 at least once. PLS 772 is only offered during the Fall term.
- Each student is required to present an exit seminar at the time of the final MS or PhD exam.
- The 2022-2023 research symposium will take place in January 2023 prior to the start of the Spring term

Speaking of Seminars

There is a weekly PSS seminar (Fridays at 3:00 PM) reserved for outside speakers, special occasions, and in-house faculty.

Student presentations (proposal talks and progress reports) should be given at the 3MT competition or the research symposium, which will be held:

- October 21, 2022 – IPSS GSA 3MT Competition, MC: Sara Qian
- January 6, 2023 – IPSS Symposium; PLS 772 MC: Dr. Unrine

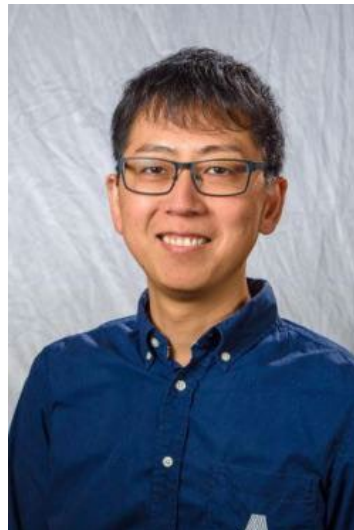
The research symposium provides an opportunity to improve your presentation skills; one that can be tailored to better resemble the venues outside of school in which you will be presenting your work.

There will still be opportunities to schedule special seminars to accommodate outside speakers and graduate student exit seminars as required.

Contact one of the 2020-2021 PSS Seminar Committee Members:



Montse Salmeron (Chair)



Tomokazu Kawashima



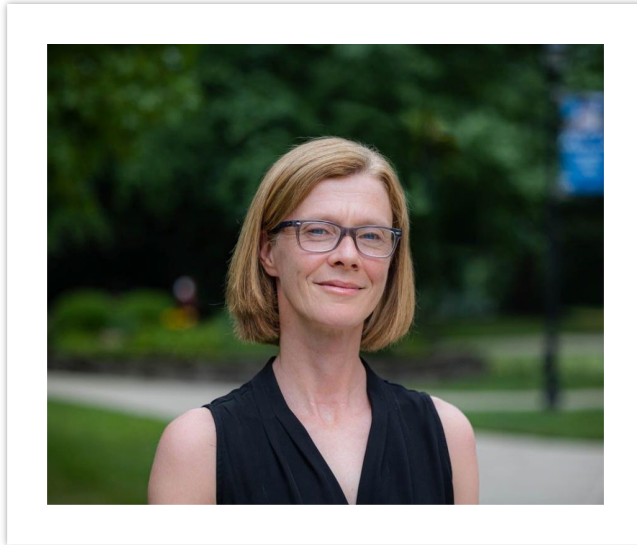
Christopher Shepard

Student Members: Jarad Cochran, Brian Rinehart

Administrative Assistant: Stacy Underwood

To advertise exit seminars, contact Stacy Underwood
(stacy.underwood2@uky.edu)

UK Office of
Academic Ombud Services
A neutral, independent and confidential resource for UK students and faculty



Dr. Alice Turkington,
Academic Ombud
2021-22
109 Bradley Hall
(859) 257-3737
ombud@uky.edu

Confidential fax:
(859) 257-5346

The role of the Academic Ombud is to
“resolve academic-related problems and conflicts.”

You may also visit the Academic Ombud Services website @
<http://www.uky.edu/Ombud/>

Faculty, at this link, you will find resources for preparing for the fall semester

Graduate Student Fees



Tuition Per Semester 2022-2023

In-state tuition \$6,767
(Departments cover in-state tuition of GRAs)

Out-of-state \$16,924.15
(Graduate School Provides Tuition Scholarships for the out of state portion \$9,839)

Does not include support for summer school; tuition for summer school enrollment is the responsibility of the student. GRAs are otherwise considered full-time during summer.

Students are responsible for class-related fees such as: textbooks, handouts, lab fees, and costs of field trips.

Tuition is covered for up to 12 hours per semester. GRAs cannot take more than 12 hours per semester except by permission.

Your choice of classes should be approved by your Advisory Committee.

2022-2023 MANDATORY FEE ASSESSMENT POLICY – GRADUATE STUDENTS

	Full-Time Per Semester	Part-Time Per Credit Hour
UK Campus		
Diversity Fee	\$6.00	\$0.70
Environmental Stewardship	4.00	0.45
Kentucky Kernel	2.00	0.25
Student Government Association	12.00	1.40
Technology	106.00	12.05
WRFL Student Radio	5.50	0.65
Campus Modernization – Enhancing the Core	6.00	0.70
Center for Community Outreach	4.00	0.45
Campus Recreation	74.00	8.25
Student Activities Board	16.25	1.85
Student Center	131.25	14.75
Student Center Renovation	81.00	9.05
Student Involvement	27.25	3.05
Student Services	13.50	1.50
Transportation Services	5.00	0.60
International Study Abroad	6.75	0.75
Student Health Fee	131.35	—
Student Wellness	49.65	5.55
GRAND TOTAL	\$681.50	\$62.00

	Full-Time Per Semester	Part-Time Per Credit Hour
Exclusively Enrolled in Distance Learning Courses		
Diversity Fee	\$6.00	\$0.70
Environmental Stewardship	4.00	0.45
Kentucky Kernel	2.00	0.25
Student Government Association	12.00	1.40
Technology	106.00	12.05
WRFL Student Radio	5.50	0.65
GRAND TOTAL	\$135.50	\$15.50

2022-2023
MANDATORY
FEE ASSESSMENT
POLICY
(most recent info)

https://www.uky.edu/studentaccount/sites/www.uky.edu.studentaccount/files/Mandatory%20Fees%202022-2023_0.pdf

Realistic Non-Tuition Expenses (From 2017 Grad Student Survey)

Spending Per Month			
Spending Category	Average Monthly Spending in USD	Median	Mode
Food	368.29	347.78	231.85
Housing	883.96	811.49	695.56
School	86.06	57.96	57.96
Health	61.85	28.98	0.00
Gasoline	100.00	70.00	10.00
Car Insurance	85.73	86.95	0.00
Debt	192.03	46.37	0.00
Entertainment	71.33	57.96	57.96
Other	150.46	40.57	0.00
Total	1999.71	1548.07	1053.35

Insurance for 2022-2023

Student health insurance premium for 2022-2023 is \$2,654 for the year or \$1,008 for fall semester and \$1,646 for the spring and summer semesters combined.

Premiums are included in your RA contract (GSAS).

The new policies are with “Academic Health Plans” (you can use your own insurance if you want).

See University Health Service for details.

<http://gradschool.uky.edu/health-plan>

Eligibility, domestic and international student questions:

<https://www.uky.edu/hr/benefits/student-health-plan>



University Health Services (\$131.35 per semester)

Included in Mandatory Fees

Not covered by Academic Health Plans or RA assistantship or fellowship.



The University Health Services Fee gives you access to services and consultation at the University Student Health Clinic at Limestone and Rose.

Parking Permits

Parking on Campus is a costly privilege.

Graduate Research Assistants are eligible for employee Permits

2022-2023 Annual Cost \$357 [8.5 months (9/1 - 5/15)]

Single-day tags can be purchased through PTS. Cost varies by location and time of day (ca \$4.25 for an 'E' sticker).

Improper parking (including bicycles) incurs substantial fines or towing.

<https://www.uky.edu/transportation/park/studentpermits>



Bikes on Campus Must Show a Permit Obtained From PTS.

Online Registration

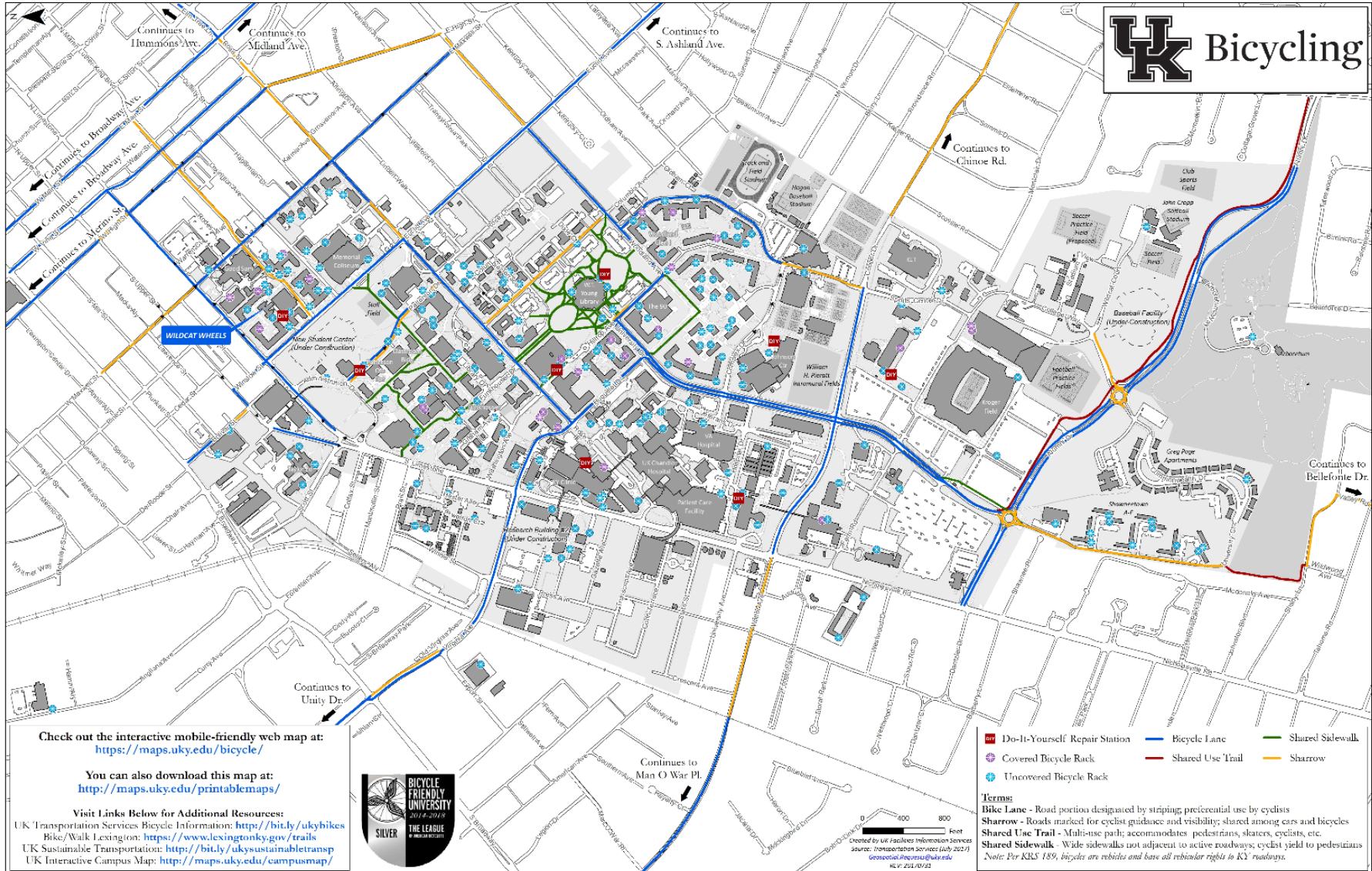
Bike permits (free) are available online. Sign into the [Parking Account Manager](#), you will see “Bicycle Parking”. Click on that and follow the directions on the next screen. This should take you to a page which allows you to select a bike permit. If you have more than one bike you wish to register, you may do so at this time. After completing the application, PTS will mail the permit to you.

Processing and delivery for online applications may take up to one week. Permits may also be obtained in person at the Press Avenue Garage (PS #6).



Bicycle Facilities

<https://www.uky.edu/transportation/bikemap>



All UK faculty, staff, and students may ride LexTran for free by showing their employee or student ID.

UK's on-campus routes (the [Blue](#), [White](#), [Yellow](#), [Green](#) and [Orange](#) routes) operate on a continuous loop, providing riders with reliable and timely transportation. If you're looking to travel a little farther afield, consider UK's [Free Citywide Transit](#) program. This free service was developed through a partnership between Transportation Services and the Lexington Transit Authority (Lextran). It enables UK students and employees to travel all of Lextran's Lexington routes for free, simply by showing a University ID.

Transportation Services also offers several special shuttles throughout the year, including free transportation to and from the Blue Grass (LEX), Louisville (SDF) and Northern Kentucky/Cincinnati (CVG) airports for the Thanksgiving, winter and spring breaks. A separate partnership with BreakShuttle gives students yet another travel option during academic breaks. This charter bus service operates three routes (Atlanta, Chicago and Cleveland) serving more than 10 cities, all within a six-hour radius of UK.



A blurred background image of a library or study area. Two students are visible, one in the foreground looking down at a book or device, and another slightly behind. Bookshelves filled with books line the walls. The overall lighting is dim and has a blueish-purple tint.

Graduate Student Support

TA Opportunities

Course Sections/TA*	Offered	Number of
PLS 103 sections	Fall and Spring	multiple
PLS 104 sections	Fall and Spring	multiple
PLS 366 sections	Fall and Spring	multiple
ABT 495	Fall and Spring	1 section

*In order to fulfill departmental funding support requirement or to receive the \$1,000 stipend (if not departmentally-funded)

See Suzette Walling (s.walling@uky.edu) for more information about future opportunities.

Guide to TA Administration:

<https://gradschool.uky.edu/guide-ta-administration>

Support For Travel to Meetings and Competitions

2022-23

The IPSS Program has block funding to support student travel to attend regional and national meetings (up to \$600 per student depending on the level of participation).

Funds are limited and distributed on a first come/first served basis. Until Dec. 31, 2022, each IPSS graduate student can apply once for travel support. Depending on availability of remaining funds, students can apply for being supported for another travel after January 1, 2023.

Travel support for students entered in competitions (up to \$300) is also available.

A travel funding request form is posted on the IPSS website (<https://ipss.ca.uky.edu/current-students>). All requests should be submitted to the DGS, Ole Wendroth (owendroth@uky.edu).

IPSS Travel Award Request 2022/23

For Fiscal Year 2022/23 the IPSS Graduate Program will offer up to \$600 travel award grants for students presenting research as 1st authors at regional, national, and international meetings. Grants will be awarded on a first come-first served basis until the available funding is exhausted. After completion, please submit this form to the DGS Ole Wendroth (owendroth@uky.edu).

<input type="text"/>	<input type="text"/>
Student First Name	Student Last Name
<input type="text"/>	<input type="text"/>
Student Email	Student ID Number
<input type="text"/>	<input type="text"/>
Advisor Name	Advisor Email
<input type="text"/>	<input type="text"/>

Meeting/Conference Name or Research Travel Purpose	
<input type="text"/>	<input type="text"/> to <input type="text"/>
Meeting/Conference Name or Research Travel Destination	Travel dates

Please check all that apply (if applicable):

- I will be presenting at the meeting/conference (*provide evidence of authorship*)
- I will be attending the meeting/conference
- I will be competing at the meeting/conference

<input type="text"/>	<input type="text"/>	<input type="text"/>
Total cost of travel	Total other funding (i.e. from faculty advisor)	Total funds requested from IPSS

Have you received funding from the IPSS program during this academic year? Yes No

<input type="text"/>	<input type="text"/>
Student Signature	Date

Approval from IPSS Program

Total Amount of Funding Awarded: <input type="text"/>	Account: <u>1012150020</u>
	SIO: <u>809000019205</u>

<input type="text"/>	<input type="text"/>
DGS or PSS Signature	Date

If you need assistance making travel arrangements or submitting documents in Concur, please reach out to Stacy Underwood (stacy.underwood2@uky.edu), PSB 105. Please remember, when you charge travel expenses upfront to your personal credit card, reimbursement will occur only after the travel event.

Other IPSS Funding Support

GSA Travel Grant	Subsidized participation in the annual IPSS GSA Professional Development Trip
Symposium Award	Prizes for the best talks presented at the IPSS Research Symposium
Best New and Continuing Student	Prize for best overall performance by new or continuing MS and PhD students (Faculty nominated)
Service Award	Service as one of the IPSS GSA Officers

Research Activity Awards

Designed to stimulate research and scholarship, Research Activity Awards (RAA) represent five percent of annual indirect cost recovery for the college. Preference for these awards is given to faculty in early or transitional stages of their careers.

Guiding Principles for Research Activity Awards in the College of Agriculture:

- **build competitiveness in the peer-reviewed science world**
- **strengthen graduate programs (Graduate student support [equipment, supplies, professional travel to conduct research at distant sites]).**
- **encourage programs with high potential to have an impact on Kentucky's economy, society, or environment**

For More Information About College Research and Research Scholarships Availability Contact:

Tom Hanna

Assistant Director, Kentucky Agricultural Experiment Station
(tom.hanna@uky.edu)

Research Support Grant Program

This internal grant program is designed to enhance UK's research enterprise by assisting individual investigators in accelerating their research programs.

The program is offered annually, and will support the following:

1. Pilot studies to obtain preliminary data to enhance the competitiveness of extramural research grant applications, or for new creative research avenues.
2. Studies to obtain preliminary data requested by reviewers of an externally-submitted grant.

Awards will generally be from \$4,000 to \$20,000 (maximum allowed) and **costs should be commensurate with the proposed work**. Awards will be for one year only from the date of award. No more than one application per faculty member will be funded in a three-year period from the time of the award. If an investigator has received research support funding through other programs offered by the Office of Research or from other institutional grant support mechanisms (e.g., COBRE Pilot Projects, CCTS Pilot Projects, NSF EPSCoR, College of Medicine MVP Program, etc), they are ineligible to compete for these funds for the same project (or in the same year). Investigators who have significant amounts of research funding or start-up funds will be less competitive for these grants.

Fellowships/Awards

- Fellowship opportunities are available through the Graduate School. These fellowships each have different purposes and eligibility criteria. All fellowships, unless otherwise noted, are DGS -nominated, which means your Director of Graduate Studies decides who from your department/program to nominate for the award. If you believe that you meet the criteria for a fellowship and are interested in being nominated, please contact your Director of Graduate Studies.
- Some of these awards are by self-nomination. Check the Graduate School Website for opportunities.
- For more information:
 - Grad.fellowships@uky.edu

Join A Professional Society!

Benefits:

- ▶ Discounted registration for annual meetings
- ▶ Discounted prices on society monographs and journals
- ▶ Professional recognition and fellowship
- ▶ Potential for travel grants and fellowships
- ▶ Job placement services
- ▶ Early career training and advice
- ▶ Participate in Science Advocacy for your discipline

Examples:



Graduate Student Progress



Graduate Students cannot receive a grade of 'D.' Their grading scale is 'A,B,C,E.'

After 12 hours of accumulated graduate credit, a semester with a cumulative GPA < 3.0 will result in academic probation and loss of tuition scholarships from the Graduate School.

Two consecutive semesters with a cumulative GPA < 3.0 results in termination from the graduate program.

You must have a cumulative GPA ≥ 3.0 to graduate.

Annual Review of Progress

The Graduate School requires that progress toward completion of your graduate program is reviewed by your advisory committee and the DGS each year.

Annual Review of Progress is due on 15 March.

Renewal of GSAS contracts on July 1 depends on “good” progress.
Notification should occur by 30 April

The form of the Annual Review of Progress differs among the different graduate programs.

Annual Review of Progress

- By March 15 of each year all students will provide a progress report to the DGS
- The progress report will consist of a list of milestones achieved, advisor evaluation, CV, and narrative statements
- The progress report must be reviewed and signed by the research advisor and student
- Failure to turn in the progress report has consequences

**Part 2 - Program Milestones (completed by student)
(Leave milestone blank if not applicable)**

Milestone	Date
Started program	
Outlined program of study (should complete by end of first term of study)	
Formed advisory committee (Should complete by end of second term of study)	
Presented research proposal (Should present by end of second term of study)	
Completed required classes	
Scheduled qualifying examination (PhD only) (Should occur by the end of the 4 th term of study)	
Passed qualifying examination (PhD only)	
Scheduled final examination (Normative time for M.S. students is 2 years; PhD students 3 years)	
Submitted research paper(s)	

Assessment of Learning Outcomes

At various stages of your UK career, you will be asked to help assess our effectiveness in achieving and improving the “Learning Outcomes” of our graduate programs.

We have four learning outcomes:

1. Knowledge of your field.
2. Skills supporting your knowledge.
3. Ability to communicate.
4. Professional attributes.



You will provide most of this information in the annual CV of your
Progress Report

The Graduate School Provides Various
Check Sheets For Students To track Their
Progress.

These Are Particularly Important To
Follow During the Semester in Which
You Intend to Graduate.

Check sheet for Doctoral Students

One year prior to qualifying exam:

Formation of advisory committee _____ (Date Submitted)

http://www.research.uky.edu/cfdocs/gs/DoctoralCommittee/Selection_Screen.cfm

The advisory committee has a core of four members. This core consists of the major professor as chair, two other members from the major area, and at least one representative from any minor area(s). At least one representative must be from outside the academic program (department). All members of the core must be members of the Graduate Faculty of the University of Kentucky and three (including the major professor) must possess full Graduate Faculty status.

At least two weeks prior to qualifying exam date:

Qualifying Examination Request _____ (Date Submitted)

http://www.research.uky.edu/cfdocs/gs/DoctoralCommittee/Selection_Screen.cfm

-Students must have the equivalent of 2 years of residency (36 hours)

- Conduct a review of your transcript to insure you don't have any missing grades; I grades and your GPA is 3.00 or higher. Graduate School policy will not allow you to sit if you have unresolved academic issues.

After passing the qualifying exam, students must maintain continuous enrollment until dissertation is successfully defended.

The semester you intend to graduate:

Application for degree: _____ (Date Submitted)

<http://myuk.uky.edu/> Click on Student Services / myRecords / Graduate Degree Application

Due 30 days after the beginning of the semester (15 days for 2nd summer session). Please see

<http://www.uky.edu/Registrar/AcademicCalendar.htm> for specific deadlines. You must resubmit the application for degree the following semester if you do not graduate.

At least eight weeks prior to expected final exam date:

Notification of Intent: _____ (Date Submitted)

http://www.research.uky.edu/cfdocs/gs/DoctoralCommittee/Selection_Screen.cfm

Once submitted, the graduate school will appoint an outside examiner. There must be a two week window given in order to find and appropriate outside examiner. Assigning the outside examiner typically takes 4-5 weeks and you will receive an email when an outside examiner has been found.

At least 2 weeks prior to examination:

Request for Final Doctoral Examination: _____ (Date Submitted)

http://www.research.uky.edu/cfdocs/gs/DoctoralCommittee/Selection_Screen.cfm

Dissertation Approval form (no longer required by the Graduate School)

Dissertation:

You have 60 days following the date of your defense to submit your final, accepted document to the Graduate School. You will not have the entire 60 days if you defend late in the semester and need to graduate that semester (check <http://www.uky.edu/Registrar/AcademicCalendar.htm> for submission deadlines). Prior to final submission you must have your dissertation reviewed by the Graduate School for a first format check. This process takes about 48 hours but may take longer during peak periods, especially during the end of the semester. Please plan accordingly.

Check sheet for Master's Thesis Students (Plan A)

The semester you intend to graduate:

Application for degree: _____ (Date Submitted)

<http://myuk.uky.edu/> Click on: Student Services / myRecords / Graduate Degree Application

Due 30 days after the beginning of the semester (15 days for 2nd summer session). Please see

<http://www.uky.edu/Registrar/AcademicCalendar.htm> for specific deadlines.

At least 2 weeks prior to examination, submit this form:

Request for Final Master's Examination: _____ (Date Submitted)

http://www.research.uky.edu/cfdocs/gs/MastersCommittee/Student/Selection_Screen.cfm

(The Thesis Approval form is incorporated into the above online form)

Conduct a review of your transcript to insure you don't have any missing grades; I grades and your GPA is 3.00 or higher. Graduate School policy will not allow you to sit for the exam if you have unresolved academic issues.

The final examination must take place no later than eight days prior to the last day of classes of the semester in which the student expects to graduate. Final examinations may not be scheduled during the period between semesters or between the end of the eight-week summer session and the beginning of the fall semester. Consult the Academic Calendar

(<http://www.uky.edu/Registrar/AcademicCalendar.htm>) for deadlines for the scheduling of final examinations.

Thesis:

You have 60 days following the date of your defense to submit your final, accepted document to the Graduate School. You will not have the entire 60 days if you defend late in the semester and need to graduate that semester (check <http://www.uky.edu/Registrar/AcademicCalendar.htm> for submission deadlines). Prior to final submission you must have your thesis reviewed by the Graduate School for a first format check. This process takes about 48 hours but may take longer during peak periods, especially during the end of the semester. Please plan accordingly.

Check sheet for Master's Non-Thesis Students (Plan B)

The semester you intend to graduate:

Application for degree: _____ (Date Submitted)

<http://myuk.uky.edu/> Click on: Student Services / myRecords / Graduate Degree Application
Due 30 days after the beginning of the semester (15 days for 2nd summer session). Please see
<http://www.uky.edu/Registrar/AcademicCalendar.htm> for specific deadlines.

At least 2 weeks prior to examination, submit:

Request for Final Master's Examination: _____ (Date Submitted)

http://www.research.uky.edu/cfdocs/gs/MastersCommittee/Student/Selection_Screen.cfm

Conduct a review of your transcript to insure you don't have any missing grades; I grades and your GPA is 3.00 or higher. Graduate School policy will not allow you to sit for the exam if you have unresolved academic issues.

The final examination must take place no later than eight days prior to the last day of classes of the semester in which the student expects to graduate. Final examinations may not be scheduled during the period between semesters or between the end of the eight-week summer session and the beginning of the fall semester. Consult the Academic Calendar (<http://www.uky.edu/Registrar/AcademicCalendar.htm>) for deadlines for the scheduling of final examinations.

Intellectual Properties

All data, discoveries, patents, etc., generated during the tenure in research assistantship or graduate programs are assigned to the University of Kentucky.

Authorship of publications based on your research is a critical issue. You are expected to submit at least one manuscript for publication prior to your final exam or defense. Your publication benefits you, your advisor, our college and the university. It becomes part of “Digital Measures”.

Documentation is required for “discovery.”

Backup of research data is critical. Fires happen (even in the field). Floods happen (even in a building). Send copies of your data to your advisor.



Graduate School Professional Development Support

The following is a listing of the Graduate Certificates To search exclusively for online programs, visit the [UK Online portal](#).

[Advanced Materials Characterization \(online\)](#)
[Anatomical Sciences](#)
[Applied Environmental & Sustainability Studies \(online\)](#)
[Applied Nutrition & Culinary Medicine \(online\)](#)
[Applied Statistics \(online\)](#)
[Assistive & Rehabilitation technology \(online\)](#)
[Assistive and Rehabilitation Technology](#)
[Autism Spectrum Disorder](#)
[Baroque Trumpet](#)
[Biostatistics](#)
[Child Welfare Practice](#)
[Clinical & Translational Science](#)
[Clinical Social Work \(online\)](#)
[Cognitive Science](#)
[College Teaching & Learning](#)
[College, Career, and Civic Life](#)
[Computational Fluid Dynamics](#)
[Developmental Disabilities](#)
[Developmental Disabilities \(online\)](#)
[Digital Mapping \(online\)](#)
[Distance Education \(online\)](#)
[Distance Education for EDC](#)
[Distance Education for EDS](#)
[Diversity & Inclusion \(online\)](#)
[Engineering in Healthcare](#)
[Eurhythmics](#)
[Executive Educational Leadership \(online\)](#)
[Explosives & Blasting \(online\)](#)

[Family & Consumer Sciences \(online\)](#)
[Fundraising & Development \(online\)](#)
[Gender & Women's Studies](#)
[General Radiological Medical Physics](#)
[Gerontology](#)
[Global Health](#)
[Health Coaching](#)
[Health Communication](#)
[High Performance Coaching](#)
[Historic Preservation](#)
[Historic Preservation \(online\)](#)
[Human Technology Interaction](#)
[Improving Healthcare Value](#)
[Information Communication Technology \(online\)](#)
[Instructional Coaching](#)
[Instructional Coaching \(online\)](#)
[Instructional Communication](#)
[Interdisciplinary Early Childhood Education - Initial Certification \(online\)](#)
[International Education](#)
[Latin American, Caribbean, and Latino Studies](#)
[Latin Studies](#)
[Leadership for Deeper Learning](#)
[Leadership for Deeper Learning \(online\)](#)
[Lean Systems](#)
[Lean Systems \(online\)](#)
[Liberal Studies \(online\)](#)
[Manufacturing Systems Engineering \(online\)](#)
[Military Behavioral Health](#)
[Musculoskeletal Injury Management](#)
[Music Theory Pedagogy](#)
[Next Generation Teaching & Learning](#)
[Nonprofit Management](#)
[Orff Schulwerk](#)

[Physiology Teaching](#)
[Positive Youth Development \(online\)](#)
[Post Graduate A.P.R.N. Certificate \(online\)](#)
[Power & Energy](#)
[Power Systems \(online\)](#)
[Professional & Technical Writing](#)
[Professional & Technical Writing \(online\)](#)
[Public Financial Management \(online\)](#)
[Public Health Management](#)
[Rehabilitation Counseling](#)
[Research Methods in Education](#)
[Research Methods in Education \(online\)](#)
[Risk Sciences \(online\)](#)
[School Social Work](#)
[School Technology Leadership \(online\)](#)
[Social Theory](#)
[Sport, Fitness, & Recreation Management \(online\)](#)
[Stream & Watershed Science](#)
[Structural Engineering \(online\)](#)
[Teaching English as a Second Language](#)
[Teaching in Culturally and Linguistically Diverse Classrooms Telehealth \(online\)](#)
[Tobacco Treatment Specialist Training \(online\)](#)
[Vocal Pedagogy](#)



GS Professional Enhancement (and list of GSPE Staff with photos)

<https://gradschool.uky.edu/professional-enhancement>

Career Exploration Series:

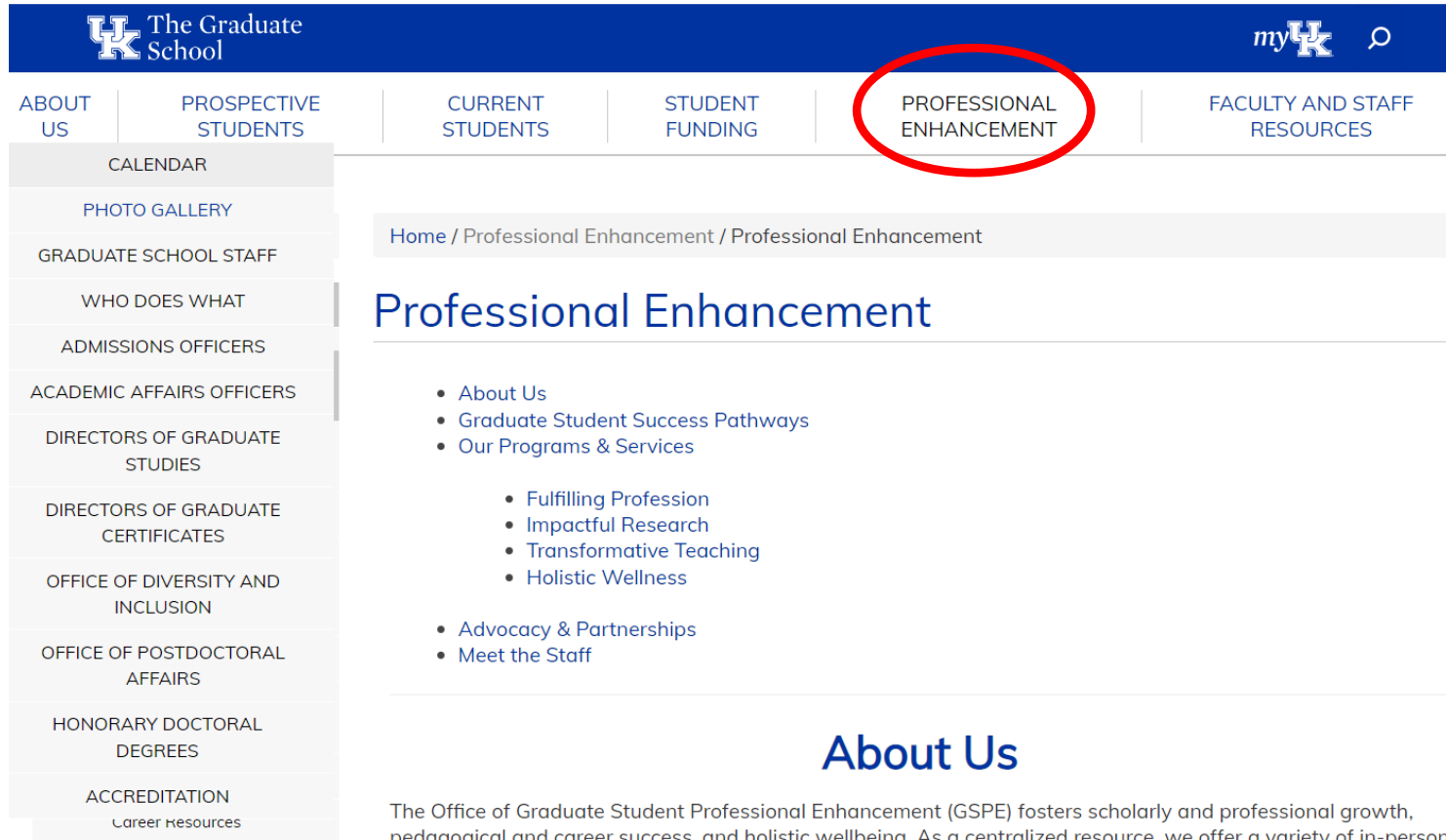
<https://gradschool.uky.edu/career-exploration-series>

Skill Building Series:

<https://gradschool.uky.edu/skill-building-series>

Additional Opportunities From The Graduate School

<https://gradschool.uky.edu/professional-enhancement>



The Graduate School

myUK

ABOUT US | PROSPECTIVE STUDENTS | CURRENT STUDENTS | STUDENT FUNDING | **PROFESSIONAL ENHANCEMENT** | FACULTY AND STAFF RESOURCES

CALENDAR
PHOTO GALLERY
GRADUATE SCHOOL STAFF
WHO DOES WHAT
ADMISSIONS OFFICERS
ACADEMIC AFFAIRS OFFICERS
DIRECTORS OF GRADUATE STUDIES
DIRECTORS OF GRADUATE CERTIFICATES
OFFICE OF DIVERSITY AND INCLUSION
OFFICE OF POSTDOCTORAL AFFAIRS
HONORARY DOCTORAL DEGREES
ACCREDITATION
Career Resources

Home / Professional Enhancement / Professional Enhancement

Professional Enhancement

- [About Us](#)
- [Graduate Student Success Pathways](#)
- [Our Programs & Services](#)
 - [Fulfilling Profession](#)
 - [Impactful Research](#)
 - [Transformative Teaching](#)
 - [Holistic Wellness](#)
- [Advocacy & Partnerships](#)
- [Meet the Staff](#)

About Us

The Office of Graduate Student Professional Enhancement (GSPE) fosters scholarly and professional growth, pedagogical and career success, and holistic wellbeing. As a centralized resource, we offer a variety of in-person and online programs and services, guided by professionals with years of experience in graduate education and enriched by a broad spectrum of campus partnerships. We are also a place of belonging and networking, apart from yet aligned with departmental academic pursuits, where graduate students may discover transdisciplinary collaborations and explore diverse career paths.

[Graduate Student Success Pathways](#)



Student Development

Professional Enhancement

Resources for Teaching
Assistants

Preparing Future Faculty

Graduate Certificate in
College Teaching & Learning
(GCCTL)

Three Minute Thesis

Versatile Ph.D.

[Home](#) / [Student Development](#) / [Versatile Ph.D.](#)

Versatile Ph.D.

Versatile PhD is an online resource to help graduate students and PhDs in all fields identify, prepare for, and succeed in non-academic careers.

Graduate students, faculty, and alumni have full access to these resources through the University's subscription.

To get started, please log into the [University of Kentucky VPhD portal](#). After successfully authenticating with your UK credentials, you'll be taken to the Versatile PhD login page. Create a VPhD member account if it's your first time. If you already have an account, sign in as usual.

Your Versatile PhD member account gives you access to the PhD Career Finder, where you can access resources from the experiences of real PhDs who have gone in new professional directions:

- **RESUME:** Authentic resumes and cover letters that got real PhDs their first jobs away from the faculty track, with detailed analysis that describes how they made the non-academic pivot and shows the application and hiring process step by step
- **BIO:** Inspiring first-person stories by experienced non-academic PhDs describing how their careers evolved over several years after moving out of the academy, including promotions, advancement, and signature accomplishments
- **PANEL:** Detailed inside information on a wide range of specific PhD-friendly careers provided by PhDs in those careers, along with their answers to a wide range of member questions

You also get access to the community discussion forums, a member directory listing thousands of PhDs working across the United States, job listings, and great information about a wide variety of possible careers.

CALENDAR

PHOTO GALLERY

GRADUATE SCHOOL STAFF

WHO DOES WHAT

ADMISSIONS OFFICERS

ACADEMIC AFFAIRS OFFICERS

DIRECTORS OF GRADUATE STUDIES

DIRECTORS OF GRADUATE CERTIFICATES

OFFICE OF DIVERSITY AND INCLUSION

OFFICE OF POSTDOCTORAL AFFAIRS

HONORARY DOCTORAL DEGREES

ACCREDITATION

Home / Professional Enhancement / GradLive!

GradLive!

UK GradLive! is a series of public presentations that challenge graduate, professional, and postdoctoral students and teaching assistants to showcase their research interests and teaching philosophies in clear, concise language to a general audience within a limited timeframe. These initiatives are excellent practice for job interviews, teaching demonstrations, and public speaking and communication. Plus, The Graduate School offers over \$3,000 in prizes for each event, as well as travel stipends to compete in regional Three-Minute Thesis competitions. **Click on the images below to learn more about each competition.**



<https://gradschool.uky.edu/gradlive>



Home / Professional Enhancement / Graduate Certificate in College Teaching & Learning

Professional Enhancement

Professional Enhancement

Resources for Teaching Assistants

Preparing Future Faculty

Graduate Certificate in College Teaching & Learning (GCCTL)

GradLive!

New Graduate Student Orientation

Grad Student Pathway

Career Resources

Graduate Certificate in College Teaching & Learning

NOTE: Please apply via the Graduate School's [online admissions application](#). **NOTE:** The PDF application, found [here](#), is also required and should be completed, scanned, and uploaded during the online application process. Please include any other required documents (CV and unofficial copy of your graduate transcript) in this single pdf file. If you are currently a graduate student at UK, you will need to create a new account to apply for the certificate in AY using an email address that is different from the one you originally used to apply.

The Graduate Certificate in College Teaching and Learning provides a coherent, integrated approach to helping graduate students, postdoctoral scholars, current faculty, and others develop and document the skills needed as part of conscientious preparation for the full range of faculty responsibilities at a range of institutions of higher education.

This 12-credit-hour Certificate, including a required 3-credit-hour supervised practicum experience, provides a rich integration of theory and practice and provides participants with tangible documentation of their expertise in college teaching and learning. The Certificate is flexible so as to be accessible to participants from a wide range of disciplines. It uses departmental courses related to college teaching and learning as well as centralized courses.

The Certificate builds on the highly successful Preparing Future Faculty program, a collaborative effort between UK and Kentucky institutions including Asbury College, Berea College, Bluegrass Community and Technical College, Centre College, Eastern Kentucky University, Georgetown College, Kentucky State University, Lindsey Wilson College, Midway College, and Transylvania University.

The Certificate will produce graduates who are highly competitive in the job market in higher education, are quick starters as faculty members, and who can provide leadership in higher education.

Participants who are also pursuing graduate degrees are urged to apply for admission to the Certificate early in their course of graduate studies.

[GCCTL Curriculum](#)

[GCCTL Benefits](#)

[GCCTL Cost](#)

<https://gradschool.uky.edu/graduate-certificate-college-teaching-learning>

Integrated Plant and Soil Sciences Graduate Student Association (IPSS GSA)

The mission of the IPSS GSA is to foster the social, educational, and professional interests of the graduate students in Integrated Plant and Soil sciences.

Organizing the IPSS GSA is up to the current graduate students.

Dr. David Van Sanford is the Faculty Advisor for the IPSS GSA

President:	Sara Qian
Vice President:	Joyce Robinson
Business Officer:	Mounica Talasila
Social Committee Chair:	Vijyesh Sharm
Prof. Development Chair:	Paul Cockson
Grad. Student Congress:	Danielle Doering
Pres. Emeritus:	Andrea Keeney



Integrated Plant and Soil Sciences Website

<http://ipss.ca.uky.edu/>

This site is to support IPSS graduate students through common FAQs, links, announcements, awards, updates, etc.

Contact Stacy Underwood (stacy.underwood2@uky.edu)
with information

Questions?

Ole Wendroth
DGS-IPSS
Professor of Soil Physics
Ag. Sci. North N-122M
Office: 859-257-4768
owendroth@uky.edu



College Graduate Student and Postdoctoral Scholar Fall 2022 Welcome Meeting on Friday, August 19, 2022.

11:45 a.m. – 12:15 p.m.

⊙ On-site Registration outside Seay Auditorium in Lobby

⊙ Lunch available for pick-up, Seay Lobby

12:10 p.m. – 12:20 p.m.

Welcome -- in Seay Auditorium

12:20 p.m. – 1:00 p.m.

Plenary session*

1:00 p.m. – 1:10 p.m.

Break

1:00 p.m. – 1:50 p.m.

Plenary session (continued)*

1:50 p.m. – 2:00 p.m.

Wrap-up and Door Prizes -- Seay Auditorium

...and now, it's lunch time!

Photos being taken!

