



Welcome to the 2024 IPSS Graduate Student Orientation

22 August 2024

Integrated Plant & Soil Sciences Graduate Student Orientation

Covering Graduate Degrees In The
Following Disciplines:

Crop Science
Environmental and Ecosystem Science
Horticultural Science
Plant Biology and Biochemistry
Plant Pathology
Soil Science

Schedule of Today's Events

- 9:00a – 10:05a Graduate Study in Plant and Soil Sciences
Who's who? What's what?
Introduction to Graduate School and IPSS (1)
- 10:05a – 10:15a Dr. Erin Haramoto, Chair of IPSS Steering Committee
- 10:15a – 10:30a Coffee and Refreshments
- 10:30a – 10:50a GSA Introduction – Bridget Bolt, Lucca Madeo Cortarelli
and GSA Officers
- 10:50a – 11:00a Dr. Abbie Wood, Asst. Director of Graduate/Professional
Student & Post-Doc Career Support
- 11:00a – 12:00p Introduction to Graduate School and IPSS (2)
- 12:00p Lunch – Everybody is invited!
Organized by our IPSS Graduate Student Association
Graduate Student photos taken by Suzette Walling

Welcome!

This Orientation is designed to:

- **Introduce Newcomers** to the 'Ins' and 'Outs' and 'Dos' and 'Don'ts' of graduate school at UK and people who can help you get things done
- **Remind current Graduate Students** of rules and regulations
- **Remind Graduate Faculty** of what their graduate students are supposed to know



Welcome to New IPSS Graduate Students who will start in Fall 2024



Abdaal Ali
(Samuel Revolinski)



Casey Byrd
(Qinglu Ying)



Berryish M. Chellapandiyan
(Tomo Kawashima)



Gabriel De Moraes Chitolina
(Carl Bradley)



Jacob Green
(Carl Bradley)



Maddy Jenkins
(Ernie Osburn)

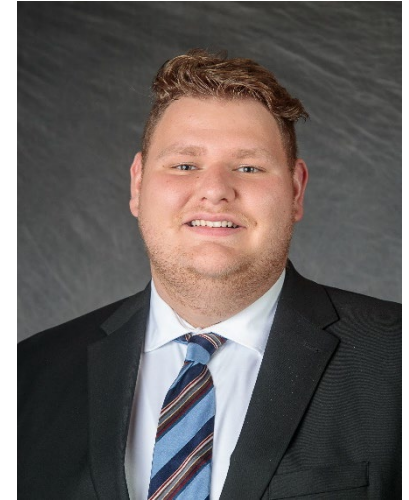
Welcome to New IPSS Graduate Students who will start in Fall 2024



Emily Marsh
(Chad Lee)



Sumi McCarty
(Rick Durham)



Joseph Ray
(Ray Smith)



Cooper Samuelson
(Luke Moe)



Austin Skenandore
(Luke Moe)

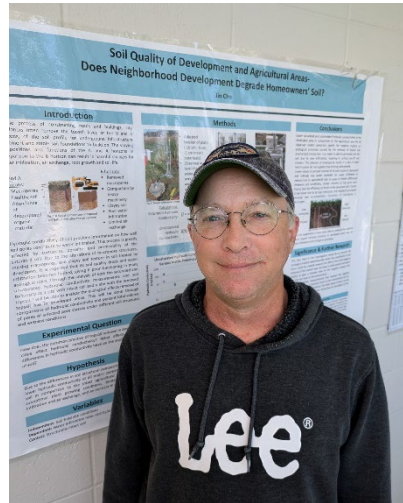


Jonathan Stephens
(Chris Teutsch)

Welcome to New IPSS Graduate Students who will start in Fall 2024



Victor Ugwuegbo
(Katsutoshi Mizuta)



Riley Jason Walton
(Ole Wendroth)



Integrated Plant and Soil Sciences

- HOME
- PROSPECTIVE STUDENTS
- CURRENT STUDENTS**
- ACADEMIC CALENDAR
- STUDENT DIRECTORY
- GRADUATE STUDENT ASSOCIATION
- EVENT CALENDAR
- SYMPOSIUM
- AWARDS
- IPSS HANDBOOK

Current Students

[2022 Orientation Presentation](#)

[FAQ's](#)

[IPSS Handbook](#)

[Travel Funding Request Form](#)

[Lab and Field Training](#)

[Graduate Student Association](#)

[Facebook Page](#)

[Featured Student Research Projects](#)

[Unofficial Mini-Application](#)

[The Graduate School at UK](#)

[Current Bulletin](#)

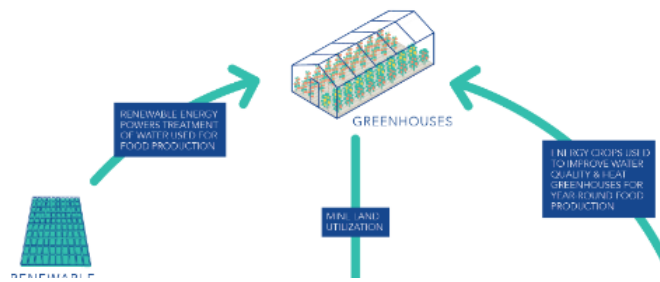
[International Center](#)

New Opportunity for Graduate Students, beginning Fall 2020

A new National Science Foundation Graduate Research Traineeship (NRT) program is available at UK, aimed at fully integrating research and professional skill development within an inclusive, multidisciplinary and supportive academy. Scholarships will be available to selected students.

Food, energy and water systems face numerous challenges in Kentucky, across the nation and throughout the globe. New approaches are needed to ensure adequate food supplies for increasing populations, to foster the development of sustainable and carbon-neutral sources of energy and to improve the management of water resources. This program will combine graduate student training with cutting-edge research in mine land remediation, water treatment, crop production and power generation and will help address the need for innovators in food, energy and water systems.

For further information, visit the NRT website: <https://nrt.uky.edu>



The University of Kentucky Graduate School



- You are all members of the Graduate School
- Graduate School Administration is located in the Gillis Building on Central Campus (next to The Main Building)

Dean Dr. Padraic Kenney



The most Up-to-Date information is found on The Graduate School's website

Including, but not limited to:

- Graduate School Bulletin
- Graduate School Forms
- Student Support

The Graduate School


myUK

ABOUT US | PROSPECTIVE STUDENTS | CURRENT STUDENTS | STUDENT FUNDING | PROFESSIONAL ENHANCEMENT | FACULTY AND STAFF RESOURCES

THE GRADUATE SCHOOL

Offices of The Graduate School

Admissions & Recruitment




Thinking about Graduate School? Research our [graduate programs](#), view the minimum requirements for admission to the Graduate School [here](#), and start your application by clicking on the link below.

...

[APPLY](#)

[Read More](#)

Finance, Funding, & Analytics




The Office of Finance, Funding, & Analytics strives to promote student success and high quality of graduate programs by applying student financial aid, facilitating assistantships and fellowships, performing budgetary accounting and data analytics, and much more.

...

[Read More](#)

Professional Enhancement




The Office of Professional Enhancement works to bolster students' success in both their academic and work life by offering events and services such as Thesis/Dissertation Writing Camps, seminars, conferences, workshops, and cultural events.

...

[Read More](#)

Academic Services



The Academic Services and Records office provides academic support and services to graduate students, maintains student records and degree completion policies and procedures, and more.

...

[Read More](#)

<https://gradschool.uky.edu/>



Graduate School Bulletin

2020-2021 Graduate Bulletin

Graduate Bulletin - Graduate Certificates

College of Agriculture, Food & Environment

Student Responsibility

It is the student's responsibility to be informed concerning all regulations and procedures required by the course of study being pursued. In no case will a regulation be waived or an exception granted because a student pleads ignorance of the regulation or asserts that information was not presented by advisors or other authorities. Therefore, the student should become familiar with the Graduate School Bulletin, including 1) the section presenting the requirements for degrees and 2) the specific program offerings and requirements.

https://gradschool.uky.edu/sites/gradschool.uky.edu/files/Bulletin/2021_2022_GraduateBulletin.pdf

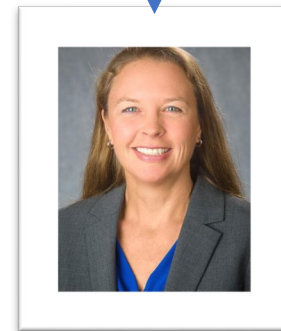
College of Agriculture, Food, and Environment (CAFE)



Dr. Nancy Cox
Dean



Dr. James Matthews
Assoc. Dean for Research



Dr. Carmen Agouridis
Assoc. Dean for Instruction

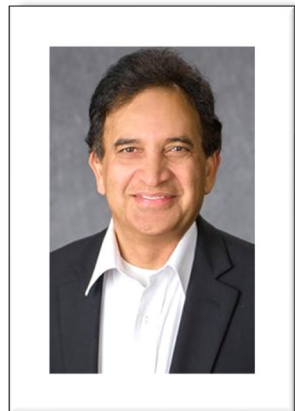
Department Chairs for units involved in or related to Integrated Plant & Soil Sciences



Rebecca L. McCulley
Plant & Soil Sciences
<https://pss.ca.uky.edu/>



Mark Williams
Horticulture
<https://horticulture.ca.uky.edu/>



S. Reddi Palli
Plant Pathology
<https://plantpathology.ca.uky.edu/>



Jeff Stringer
Forestry and Natural
Resources
<https://forestry.ca.uky.edu/>

The Merge:

IPSS

All graduate students in the Dept. of Plant Pathology with a start in or after spring 2024 will continue and complete their degree in:

IPSS

2013

2013

2024

Department of Plant & Soil Sciences
Original graduate programs:
Crop Science
Plant Biology and Biochemistry
Soil Science

Department of Horticulture
Original graduate program:
Horticulture

Department of Plant Pathology
Original graduate program:
Plant Pathology (PPA)



All graduate students (11) with a start in PPA before spring 2024 will continue and complete their degree in:

PPA

Dr. Nicole Gauthier will remain your DGS!

Degrees offered in IPSS:

Ph.D.

M.S. (Plan A = thesis option)

M.S. (Plan B = non-thesis option)

Director of Graduate Studies (DGS) Integrated Plant and Soil Sciences



Ole Wendroth
N-122M Ag Science North
(859) 257-4768
owendroth@uky.edu

IPSS Steering Committee



Chair:

Dr. Erin Haramoto

Members:

Dr. Bruce Downie (Hort.)

Dr. Nicole Gauthier (PPA)

Dr. Kendall Corbin (Hort.)

Dr. Art Hunt (PSS)

Dr. Ellen Crocker (FNR)

Dr. Liang Liang (Geography)

Dr. Ole Wendroth (DGS)

Lucca Madeo Cortarelli, Bridget Bolt
(Presidents GSA)

Vijyesh Sharma (Student-At-Large)

Integrated Plant and Soil Sciences Graduate Student Association (IPSS GSA)

The mission of the IPSS GSA is to foster the social, educational, and professional interests of the graduate students in Integrated Plant and Soil sciences.

Organizing the IPSS GSA is up to the current graduate students.

Dr. David Van Sanford is the Faculty Advisor for the IPSS GSA

President:	Bridget Bolt, Lucca Madeo Cortarelli
Vice President:	Fnu Shristi
Business Officer:	Upama Dev
Social Committee Chair:	Jack Eaker
Prof. Development Chair:	Kiera Searcy
Grad. Student Congress:	Yan Zhou
Past President:	Paul Cöckson



Department Information

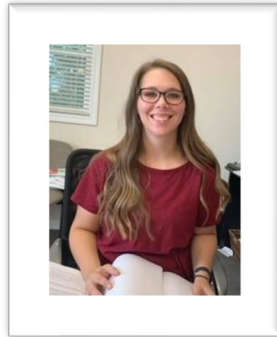


Note that you should be familiar with the office staff from your advisor's department.

Plant & Soil Sciences Front Office Staff



Suzette Walling
Department Manager
PSB 105
(859) 218-0793
s.walling@uky.edu

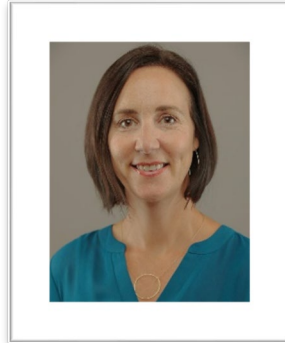


Emily Hill
Human Resources Manager
PSB 320
(859) 218-0709
sarah.hewlett@uky.edu

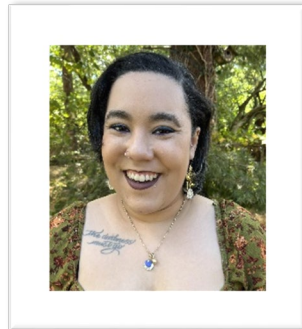


Zoë Womack
Administrative Assistant
Travel, Reservations,
Announcements
PSB 105
(859) 218-0742
Zoe.Womack@uky.edu

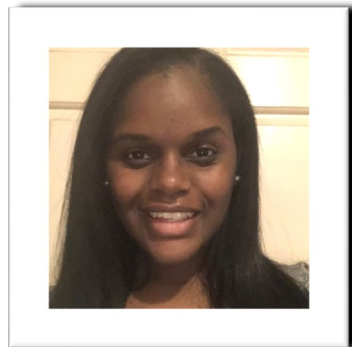
Plant & Soil Sciences Business Office Staff



Ellen Weisenhorn
Business Officer
PSB 318
(859) 218-0710
ellen.weisenhorn@uky.edu



Cheyenne Davis
Purchasing Specialist
PSB 320
(859) 218-0711
cheyenne.davis@uky.edu



Jevell D. Nealy
Business Officer
PSB 105
(859) 218-0709
cheyenne.davis@uky.edu

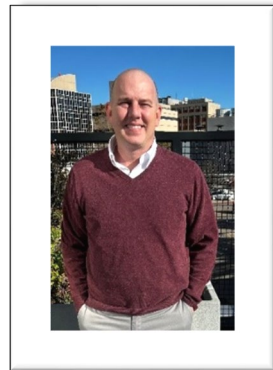
Horticulture Administrative Staff



Jaclyn Ord
Business Officer and GSAS Forms
N-318D Ag. Science Center
(859) 257-7293
jaclyn.ord@uky.edu



Miranda Holm-Hudson
Concur Travel Reports
Key & Space Inventory
N-318C Ag. Science Center
(859) 257-1601
mhho224@uky.edu

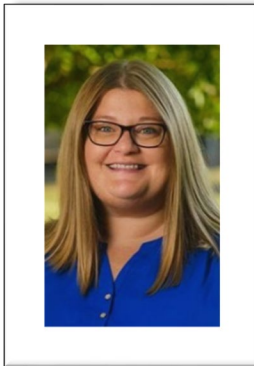


Alec Steckler
Concur Procard Reports
Orders, supplies, shipments
N-318E Ag. Science Center
(859) 257-1477
ahstec0@uky.edu

Plant Pathology Administrative Staff



Rhesa King
GSAS Forms, Key and Space inventory,
Desk assignments
201B Plant Science Building
(859) 218-1299
rking@uky.edu



Mary Perkins
Concur Travel Reports
Supplies, shipments
201E Plant Science Building
Mary.hunter87@uky.edu

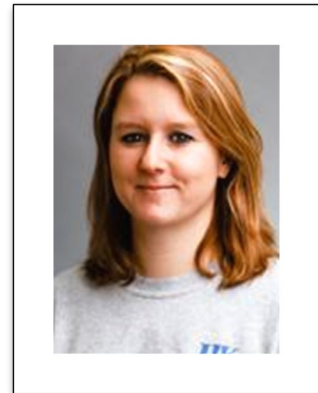


Cheryl Kaiser
Orders
201A Plant Science Building
(859) 218-1289
cakaiser@uky.edu

Plant & Soil Sciences Staff



Emily Dorward
Manager
Soil and Plant Analysis Lab
Ag. Sci. North
(859) 25
erdorward@uky.edu



Sara Carter
Spindletop Farm Coordinator
Chair Farm Safety Committee
Office: Weeds Lab, Agronomy Field Lab,
North Farm
(859) 259-1914
sara.carter@uky.edu

Certifications, Operations, Protocols, & Facilities

Various faculty/staff committees are responsible for farm safety issues and classes, field or greenhouse use, pesticide application, etc. These committees are specific to your advisor's department.

Contact chairs of specific committees for further details.



Plant & Soil Sciences Committee Chairs



**Spindletop Facilities
& Farm Safety**
Sara Carter
sara.carter@uky.edu



Farm Pesticide Use/Oversight
J.D. Green
jonathan.green@uky.edu



Greenhouses
Lauren Brzozowski
lauren.brzozowski@uky.edu



**Campus Facilities
& Management**
Jim Nelson
jim.nelson@uky.edu



**Equipment Coordinator, Federal
Excess Liaison/Surplus**
Bill Bruening
bruening@uky.edu



Spindletop Land Use
Bob Pearce
rpearce@uky.edu



**Laboratory Safety
Emergency Response**
Bill Bruening
bruening@uky.edu

Official Vehicles

- Most vehicles are assigned to projects.
- Some vehicles are shared by multiple faculty.
- Plant & Soil Sciences has one vehicle (an SUV) that can be reserved and checked out online for temporary local & farm use. **This is available to students with advisors in the PSS department only. To use it, ask your advisor to contact the PSS main office for approval.**
- An approved travel request is needed before any UK vehicle can be officially taken out of Kentucky.

Rules for State & University Vehicles

You Need:

- A valid operator's license.
- A completed Motor Vehicle Record Release form.
- At least 5 years driving experience.
- No health problems that limit or restrict driving.
- No more than two at-fault accidents in the past 3 years.
- Driving privileges are reviewed at 6 deficiency points.
- 15 passenger van drivers need training and certification.

Gate Access Card

Farms are gated. You will need a photo ID gate card for access. Ask your supervisor to request gate access for the various farms.

Forms can be completed with your department's office staff.



On-Campus Facilities



Plant Science Building
Plant Biology
Crop Science
Turf Science
Horticulture: Plant Biology



Kentucky Tobacco Research and Development Center (KTRDC)
Physiology & Biochemistry



Agricultural Science Center
Soil Science

Horticulture: Production
Grassland/Range/
Forage Science



Regulatory Services Building
Soil Testing

Seed Technology



Seedhouse-Greenhouse Complex



Thomas Poe Cooper Building
Forestry and Natural Resources

USDA - ARS

Forage Animal Production Research Unit (FAPRU)

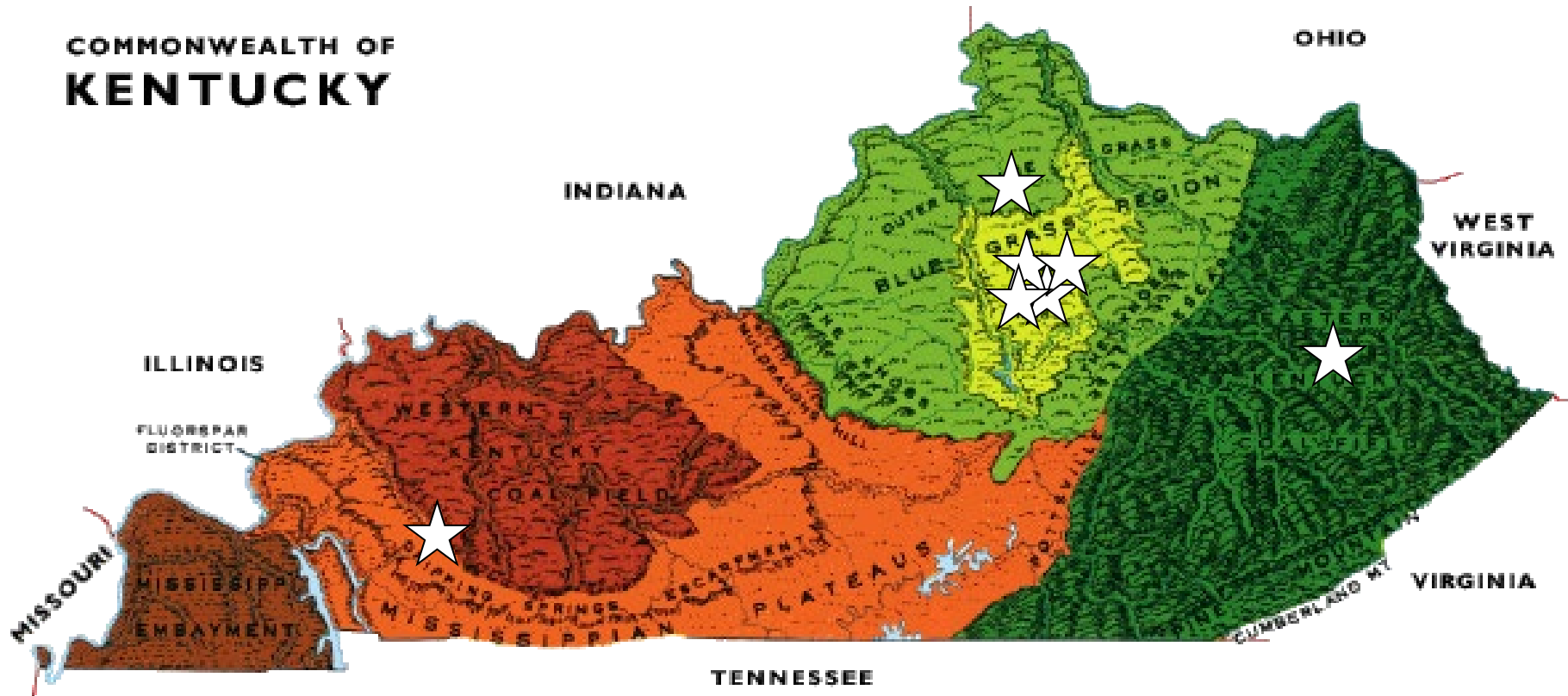
Located in Ag. Sci. Center 2nd floor
Several USDA scientists belong to our graduate faculty

If you will work in
a USDA-ARS lab
you will also need
a USDA ID



Michael Flythe
Research Leader
Michael.Flythe@ars.usda.gov

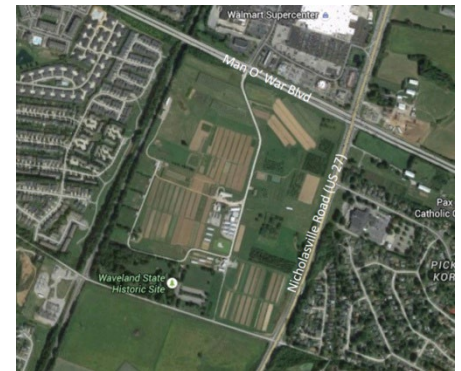
COMMONWEALTH OF KENTUCKY



Research Station Farms

Off-Campus Research Facilities

- Kentucky Agricultural Experiment Station Research Farm (Fayette Co.)
aka Spindletop, Maine Chance
- Oran Little Animal Research Center (Woodford Co.)
- Western KY Research and Education Center *aka* Princeton (Caldwell Co.) *aka* Center for Forage and Grain Crops Excellence
 - Including Graduate Student House for extended research visits
- Robinson Center for Appalachian Resource Sustainability (Quicksand KY)
- South Farm (Horticulture, Sustainable Agriculture)



Note: For the purposes of UK's 'Tobacco-Free Campus' these research sites are considered 'smoke-free.'

Working in Princeton?

UKREC (Research and Education Center, and the Grain and Forage Center of Excellence)



Your WILDCARD can become your key!



Research & Research Responsibilities



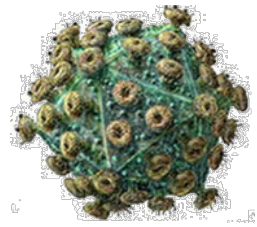
Certification is required if you work in a UK lab:

1. Chemical Hygiene Plan/Laboratory Safety
2. Hazardous Waste Management
3. Fire Extinguisher Use
4. Radiation Safety
5. Others as required

Online classes: <https://ehs.uky.edu/>

Ask your lab supervisor who might approach you for submitting your safety certifications for the lab folder (lab inspection)

Institutional Biosafety Committee



Any research involving infectious agents, potentially infectious materials, or recombinant nucleic acids must be registered with the Institutional Biosafety Committee as established by University of Kentucky policy and the NIH. Because the University receives NIH funding, **ALL RESEARCH conducted at the University must comply with the NIH Guidelines for Research Involving Recombinant DNA Molecules and University policies.**

Biohazardous materials considered worthy of registration may include, but are not limited to:

Infectious agents (viral, bacterial, fungal, parasitic, or prion)

Recombinant nucleic acids (ex: plasmids with inserts, viral vectors, etc. or whole animals and plants with introduced recombinant materials)

Infected animal blood and/or tissues

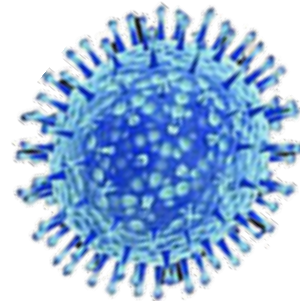
Human blood, blood products, or fluids

Infected animal blood and/or tissues

Human blood, blood products, or fluids

Human derived cell lines or tissues

Live vaccines



If you are uncertain whether material you are using in your research qualifies as biohazardous, please contact the University of Kentucky Department of Biological Safety at ehsbiosafety@uky.edu or call 859-257-8655.

Ask Your Research Advisor if Your
Research is Registered - or Needs To Be
Registered - With IBC To Remain
Safely in Compliance.

<https://ehs.uky.edu/>

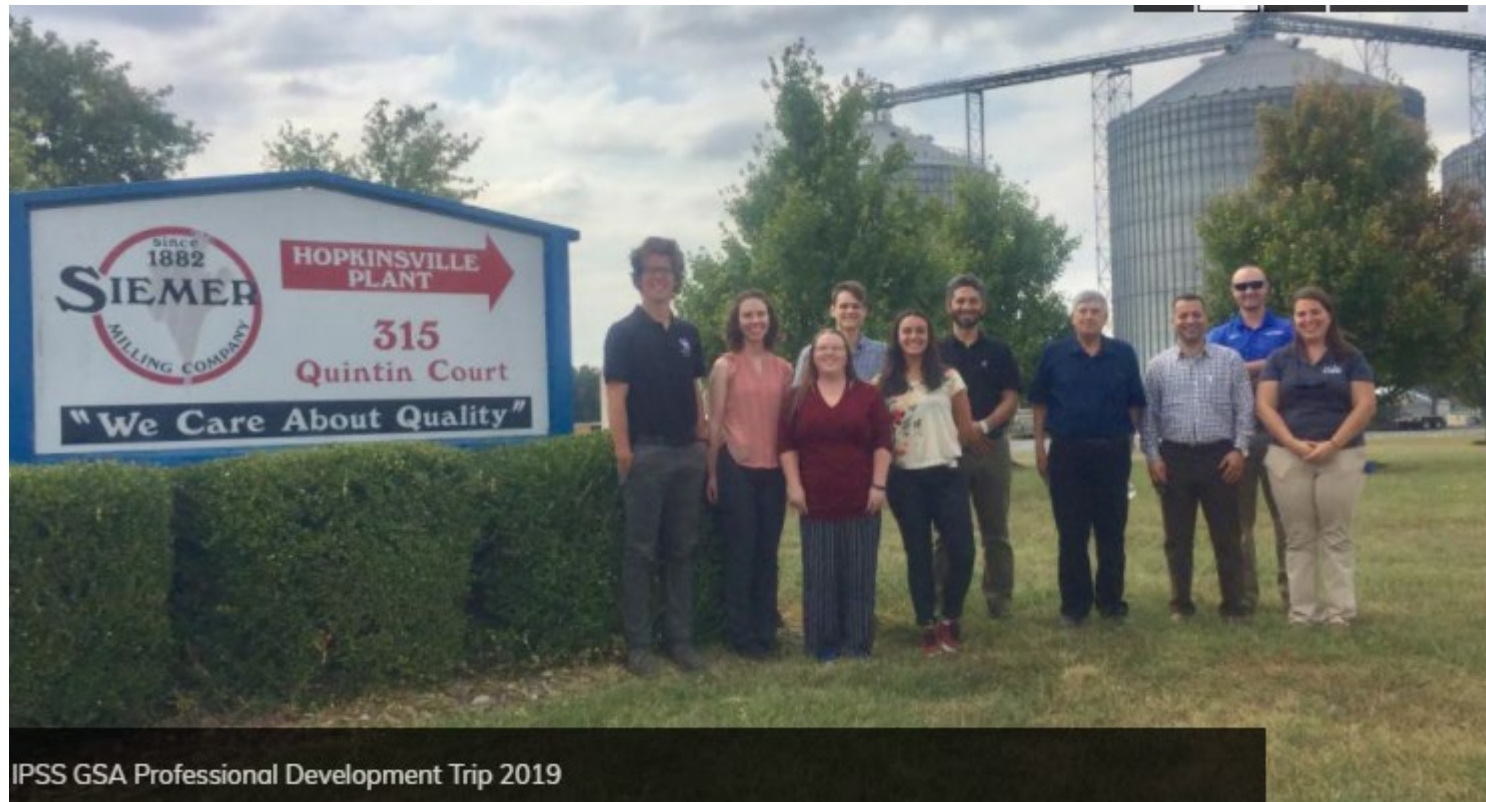
Human and Animal Research Subjects

All research involving animals must be covered by an approved IACUC protocol.

All individuals involved in animal care, treatment, and use, must be qualified to perform their duties.



IACUC: Institutional Animal Care and Use Committee

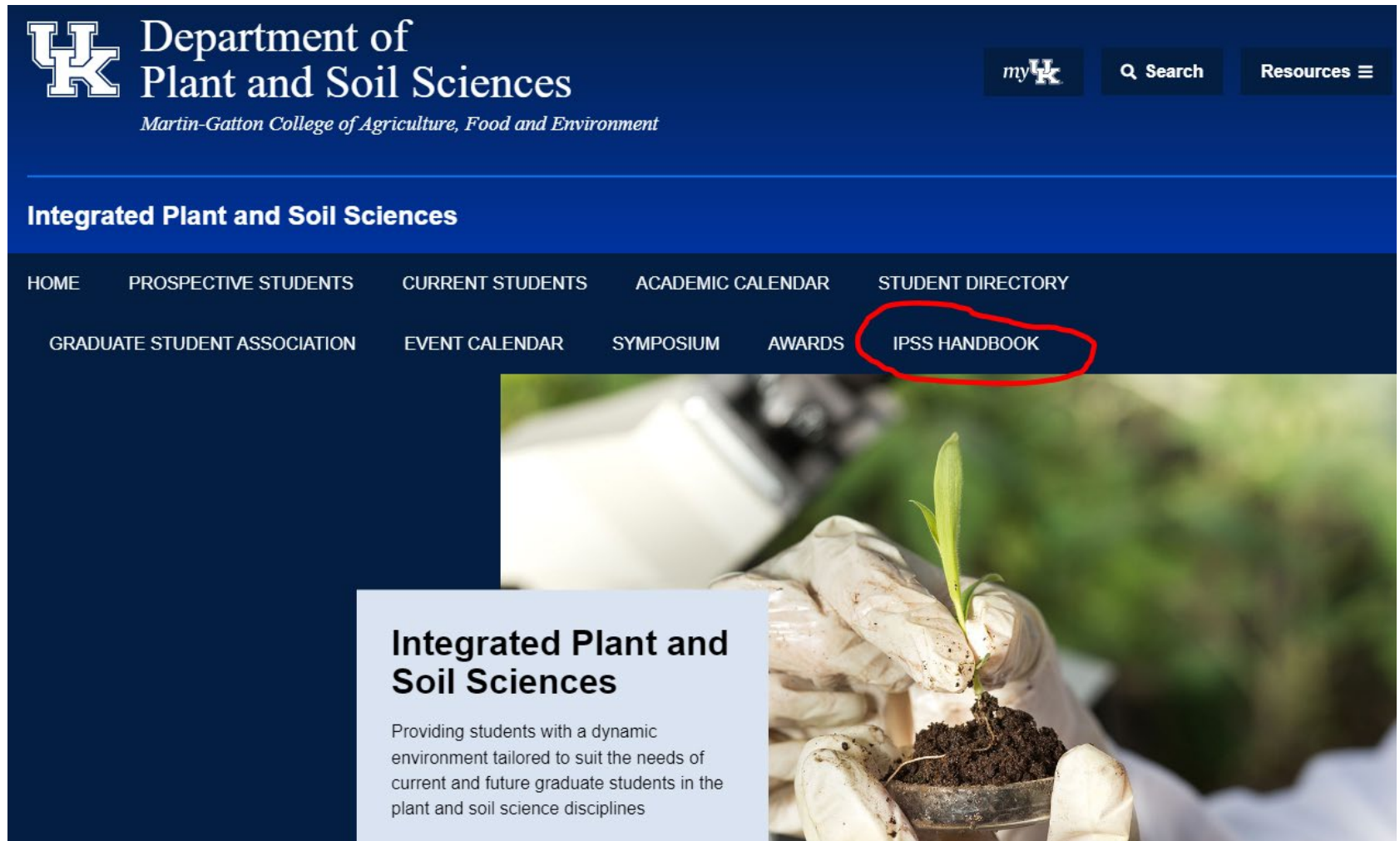


Graduate Student Resources, Rights & Responsibilities

The IPSS Graduate Student Handbook

<https://ipss.ca.uky.edu/>

<https://ipss.ca.uky.edu/2021-ipss-handbook>



UK Department of
Plant and Soil Sciences
Martin-Gatton College of Agriculture, Food and Environment

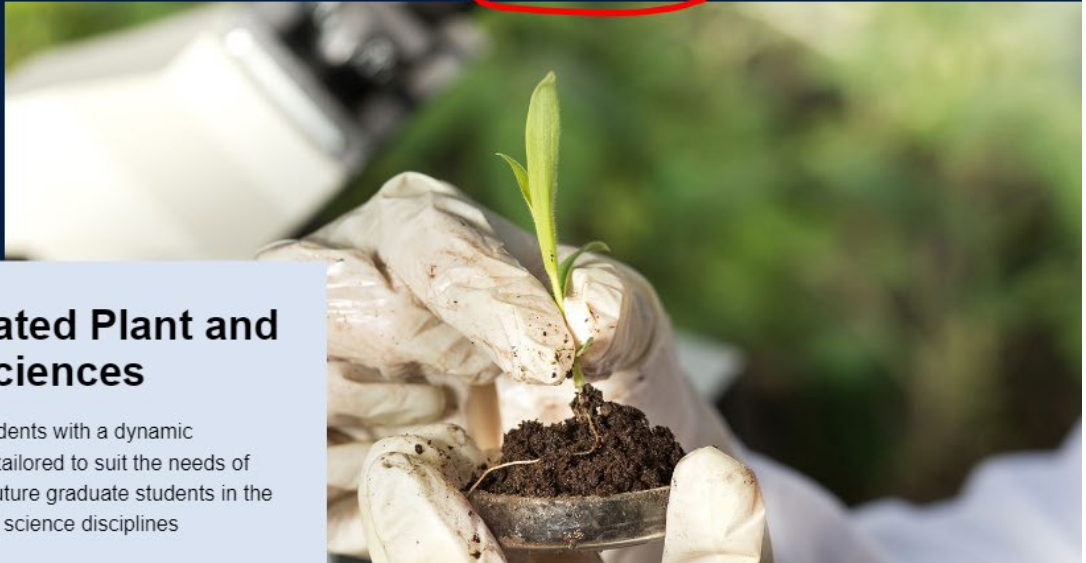
myUK Search Resources

Integrated Plant and Soil Sciences

- HOME
- PROSPECTIVE STUDENTS
- CURRENT STUDENTS
- ACADEMIC CALENDAR
- STUDENT DIRECTORY
- GRADUATE STUDENT ASSOCIATION
- EVENT CALENDAR
- SYMPOSIUM
- AWARDS
- IPSS HANDBOOK**

Integrated Plant and Soil Sciences

Providing students with a dynamic environment tailored to suit the needs of current and future graduate students in the plant and soil science disciplines



Graduate Student Academic Staff (GSAS) Notice of Appointment (Contract)

Issued twice a year (Aug. – Dec. & Jan. – July)

- Notifies the Graduate School a scholarship has been offered, approved and accepted.
- Provides a formal contract between the student and the University of Kentucky.
- Interfaces with the TA Credentials database to ensure SACS accreditation standards are met.

MS: Limited to three years

PhD: Limited to four years

Annual renewal is subject to “good progress”

Graduate Research Assistant Setup Requirements

I-9 Employment Verification Forms

W-4 Tax Forms: Federal, State, Local

Payroll: Mandatory Direct Deposit in Bank

PSS/Hort/For records: address, partner, etc.

Acceptance of GSAS forms (per semester)

The I-9 form is a Federal requirement for employment in the United States for which individuals provide documentation establishing both identity and employment eligibility.

PSS Contact:
Emily Hill
320 PSB
efmi227@uky.edu
(859) 257-7570

Horticulture Contact:
Jaclyn Ord
N-318D Ag North
jaclyn.ord@uky.edu
(859) 257-7293

Plant Pathology Contact:
Rhesa King
201B PSB
rking@uky.edu
(859) 218-1299

Student Code of Conduct

Code of Student Conduct: Rules, Procedures, Rights and Responsibilities
Governing Nonacademic Relationships

UK Campus is tobacco*, drug, and alcohol** free

All employees are subject to a criminal background check



<http://www.uky.edu/studentconduct/code-student-conduct>

* This includes University vehicles

** Exceptions include sanctioned events at Kroger Field (i.e. tailgating), Good Barn, and the Faculty Club

NOTE

With your GSAS contract and your assistantship or fellowship you have a dual role.

You are a student in the graduate program, and you are an employee of the university.

Thus, you are responsible for both the student rules and the university employee regulations.



Full-time Research Assistantships/Fellowships

Full-time: 9 credit hours (graduate level) per semester

Work hours: 8:00 am to 5:00 pm Monday to Friday
(Consider these as guidelines)

Stipends paid biweekly by direct deposit to your bank.

20 hours per week is assignable by your advisor.

No other salaried jobs are allowed without permission.

Vacation: Negotiable with your supervisor.

For tax liabilities, see Sarah Hill (PSB 320), Jaclyn Ord (ASN N-318D), and Rhesa King (PSB 201B)

Official Holiday Announcement 2024 – 2025

The University of Kentucky observes the following holidays, except where continuous service is essential, in accordance with University of Kentucky Human Resources Policies and Procedures

Holiday	Date observed	Day observed
Independence Day***	July 4, 2024	Thursday
Labor Day	September 2, 2024	Monday
Election Day	November 5, 2024	Tuesday
Thanksgiving Day	November 28, 2024	Thursday
Day after Thanksgiving*	November 29, 2024	Friday
Christmas Day	December 25, 2024	Wednesday
Special Holidays/Bonus Days ** To receive the Special Holidays, you must be employed in a regular position on or before <i>October 25, 2020</i> .	December 26, 2024	Thursday
	December 27, 2024	Friday
	December 30, 2024	Monday
	December 31, 2024	Tuesday
New Year's Day	January 1, 2025	Wednesday
Martin Luther King Jr. Day	January 20, 2025	Monday
Memorial Day	May 26, 2025	Monday
Juneteenth	June 19, 2025	Thursday
Independence Day	July 4, 2025	Friday

* The Day Before Thanksgiving, and Spring Break, are not Official University Holidays for Employees.

UNIVERSITY OF KENTUCKY NON-DISCRIMINATION STATEMENT

The University of Kentucky is committed to a policy of providing educational opportunities to all academically qualified students regardless of economic or social status and will not discriminate on the basis of race, color, ethnic origin, national origin, creed, religion, political belief, sex, sexual orientation, gender identity, gender expression, pregnancy, marital status, genetic information, age, veteran status, or physical or mental disability.



UK will not discriminate against anyone – even you!

As a globally engaged public research university, UK welcomes students and scholars from around the world.

Our faculty, scholars and students from particular countries, e.g., China and Russia are currently facing particular stresses.

They are, understandably, feeling anxious given the issues and concerns being raised – from ongoing national security concerns related to foreign government influences in academic research, to actual and rumored changes in U.S. immigration policies and the rising anti-nation sentiment in the face of global health threats and wars.

No one should feel they are being regarded with suspicion or excluded from a project based on their national origin. You can find out more about UK's commitment to research integrity [here](#).

COVID-19 and wars have helped foster negative reactions that have stigmatized and targeted certain groups. We must all recognize the deep hurt and harm this can create for those who are targeted in this way, and we must all recognize how discriminatory actions hurt UK as a whole.

It is on each of us to speak out and stand up if we witness any such behavior by reporting any such incidents to the Office of Institutional Equity and Equal Opportunity <https://ieeo.uky.edu/>

Issues of Discrimination
and Harassment Are Taken
Very Seriously

University of Kentucky Discrimination and Harassment Policy AR 6:1, HR 2.0

The University of Kentucky, in its efforts to foster an environment of respect for the dignity and worth of all members of the University community, is committed to maintaining an environment free of prohibited **discrimination**, which includes sexual and other forms of **harassment**. Discrimination and harassment are prohibited between members of the University community and **shall not be tolerated**.

Procedures

A complaint of discrimination or harassment may be initiated by contacting any:

- Dean
- Director
- Faculty Member
- Department Head
- Manager
- Supervisor
- Any individual with supervisory or administrative authority

These Individuals Are Obligated by Law to Report Any Incident to the Appropriate Authorities

Acts From Which Every Member of the University Community Are Prohibited:

- Sexual or racial harassment
- Making intentionally false accusations
- Retaliating against a complainant or any individual who participates in an investigation

Violation of these restrictions is enough to be terminated from the University and has been used to remove employees from the University.

Personal and Property Security

Large open campuses are susceptible to crimes of opportunity and crimes of intent. Buildings are now locked after hours (*ca* 5:00 pm) and on weekends.

Secure your personal and UK property: lock your office, labs, and cars when you are absent.

Ensure that computers, especially laptops, are protected and secure.

Secure your data!

Be careful after hours.

UK has a '911' system.

UK police:
from cell phone #UKPD
from land line 257-1616

Ag Security:
(859) 257-4637 (office)
(859) 509-2957 (cell)

Graduate Student Offices

Desk Space in Labs is Assignable by Your Research Advisor

A Limited Number of Offices and Desks Are Available To Graduate Students. They are Assigned on a 'First Come – First Served' Basis With Priority Given to PhD Students and Students with TA Responsibilities

For Students With an Advisor in
Plant and Soil Sciences:

PSB (3rd Floor) – Carol Von Lanken
PSB (4th Floor) – Haramoto and Clark
ASN (1st Floor) – Ole Wendroth
ASN (2nd Floor) – Jim Nelson

For Students With an Advisor in
Horticulture:

See **Miranda Holm-Hudson** or
your Advisor

For Students With an Advisor in
Plant Pathology:

See **Rhesa King** or your Advisor

Familiarize Yourself With Your Laboratory's
Building Emergency Action Plan (B.E.A.P) Including
Where to Assemble and Who to Notify.

Fire alarms can mean real fires!



Advisory Committees

Most of you have selected the chair of your Advisory Committee. It is your Research Advisor.

With your Advisor, select the other members of your committee as soon as possible (hopefully by the end of your first term).

Meet with your committee to create a plan of study and draft plans for your thesis or dissertation research. Complete the degree plan form and return it to the DGS.

Meet with your committee annually (more frequently if necessary).



Graduate Students are Responsible for:

Their graduate career

Recording and security of research data

Rate of progress

“Housekeeping”

Completing forms

Meeting deadlines & milestones

Attending seminars (this is a professional expectation)

(See above: Slide 11!)

You Will Periodically Get Messages from The Graduate School
About New Rules and Deadlines For Each Term

These Notices Come Through Your xxx@uky.edu Accounts

Make Sure You Check Them or Forward Them to your regular e-
mail account

Make sure you are on the following listserv

IPSS-GRAD@lsv.uky.edu

Contact **Suzette Walling**, s.walling@uky.edu or Ole Wendroth
(owendroth@uky.edu) to be placed on the relevant listserv

IPSS Requirements

All students in IPSS must take:

- IPS 610* – Communication in IPSS
- IPS 625 – Research in IPSS
- Either Take or Demonstrate You Have Taken One Graduate Level Statistics Course

To Be Most Useful, IPS 610 and IPS 625 Should be Taken During Your First Year at UK

*Alternative GS courses are available for students with a proven record of proficiency.



Symposium/Seminar Requirements

- Each student is expected to present at least once during the research symposium or at least once annually on campus
- Each student is required to enroll in IPS 610 at least once. IPS 610 is only offered during the Fall term.
- Each student is required to present an exit seminar at the time of the final MS or PhD exam.
- The 2024-2025 research symposium will take place in January 2025 prior to the start of the Spring term

Speaking of Seminars

There is a weekly PSS seminar (Fridays at 3:00 PM) reserved for outside speakers, special occasions, and in-house faculty.

Student presentations (proposal talks and progress reports) should be given at the 3MT competition or the research symposium, which will be held:

- October 18, 2024 – IPSS GSA 3MT Competition, MC: Lucca Madeo Cortarelli, Bridget Bolt
- January 10, 2025 – IPSS Symposium, Location TBD; IPS 610 MC: Dr. Brzozowski

The research symposium provides an opportunity to improve your presentation skills; one that can be tailored to better resemble the venues outside of school in which you will be presenting your work.

There will still be opportunities to schedule special seminars to accommodate outside speakers and graduate student exit seminars as required.

Contact one of the 2024-2025 PSS Seminar Committee Members:



Lauren Brzozowski
(Chair)



Christopher Shepard



Samuel Revolinski

Student Members: Vijyesh Sharma, Mounica Talasila

Administrative Assistant: Zoë Womack

To advertise exit seminars, contact Zoë Womack (Zoe.Womack@uky.edu)

Speaking of Seminars (cont'd)

Throughout the year, there are graduate students' exit seminars which are held when your peers graduate as part of their final exam.

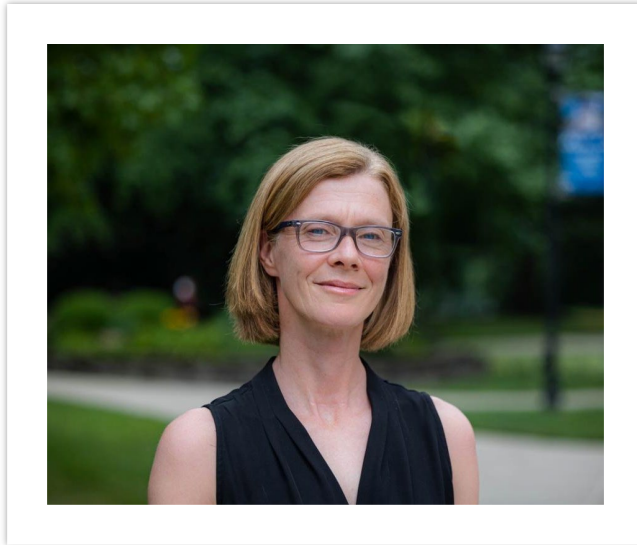
Please attend them!

You will learn

- what the other graduate student has been working on,
- how the exam candidate structures and presents their seminar,
- about the kind of questions from the audience,
- and tactics to handle them,
- how deep your own "integrated" knowledge is.

Attending the seminar is your sign of respect, support and appreciation.

UK Office of
Academic Ombud Services
A neutral, independent and confidential resource for UK students and faculty



Dr. Alice Turkington,
Academic Ombud
2021-25
109 Bradley Hall
(859) 257-3737
ombud@uky.edu

Confidential fax:
(859) 257-5346

The role of the Academic Ombud is to
“resolve academic-related problems and conflicts.”

You may also visit the Academic Ombud Services website @

<https://ombud.uky.edu/about-us>

Faculty, at this link, you will find resources for preparing for the fall semester

Graduate Student Fees



Tuition Per Semester 2024-2025

In-state tuition \$7,322.00
(Departments cover in-state tuition of GRAs)

Out-of-state \$18,119.00
(Graduate School Provides Tuition Scholarships for RA's, TA's for the out of state portion \$10,797.00)

Does not include support for summer school; tuition for summer school enrollment is the responsibility of the student. GRAs are otherwise considered full-time during summer.

Students are responsible for class-related fees such as: textbooks, handouts, lab fees, and costs of field trips.

Tuition is covered for up to 12 hours per semester. GRAs cannot take more than 12 hours per semester except by permission.

Your choice of classes should be approved by your Advisory Committee.

2024-2025 MANDATORY FEE ASSESSMENT POLICY – GRADUATE STUDENTS

	Full-Time Per Semester	Part-Time Per Credit Hour
UK Campus		
Career Preparation	\$6.00	\$0.70
Environmental Stewardship	4.00	0.45
Kentucky Kernel	2.00	0.25
Student Government Association	12.00	1.40
Technology	106.00	12.05
WRFL Student Radio	5.50	0.65
Campus Modernization – Enhancing the Core	6.00	0.70
Center for Community Outreach	4.00	0.45
Campus Recreation	74.00	8.25
Student Activities Board	16.25	1.85
Gatton Student Center	131.25	14.75
Gatton Student Center Renovation	81.00	9.05
Student Involvement	27.25	3.05
Student Services	28.50	3.00
Transportation Services	5.00	0.60
International Study Abroad	6.75	0.75
Student Health Fee	131.35	—
Student Wellness	49.65	5.55
GRAND TOTAL	\$696.50	\$63.50

	Full-Time Per Semester	Part-Time Per Credit Hour
Exclusively Enrolled in Distance Learning Courses		
Career Preparation	\$6.00	\$0.70
Environmental Stewardship	4.00	0.45
Kentucky Kernel	2.00	0.25
Student Government Association	12.00	1.40
Technology	106.00	12.05
WRFL Student Radio	5.50	0.65
GRAND TOTAL	\$135.50	\$15.50

2024-2025
MANDATORY
FEE ASSESSMENT
POLICY
(most recent info)

<https://www.uky.edu/studentaccount/sites/www.uky.edu.studentaccount/files/2024-2025%20Mandatory%20Fee%20Assessment%20Policy.pdf>

Insurance for 2024-2025

Student health insurance premium for 2024-2025 is \$2,654 for the year or \$1,185 for fall semester and \$1,937 for the spring and summer semesters combined. (https://myahpcare.com/wp-content/uploads/UKY_PC_Funded-Grad-24-25.pdf)

Premiums are included in your RA contract (GSAS).

The new policies are with “Academic Health Plans” (you can use your own insurance if you want).

See University Health Service for details.

<http://gradschool.uky.edu/health-plan>

Eligibility, domestic and international student questions:

<https://hr.uky.edu/insurance-and-retirement/health-insurance-and-benefits/options-for-receiving-health-care/student-health-plan>



University Health Services (\$131.35 per semester)

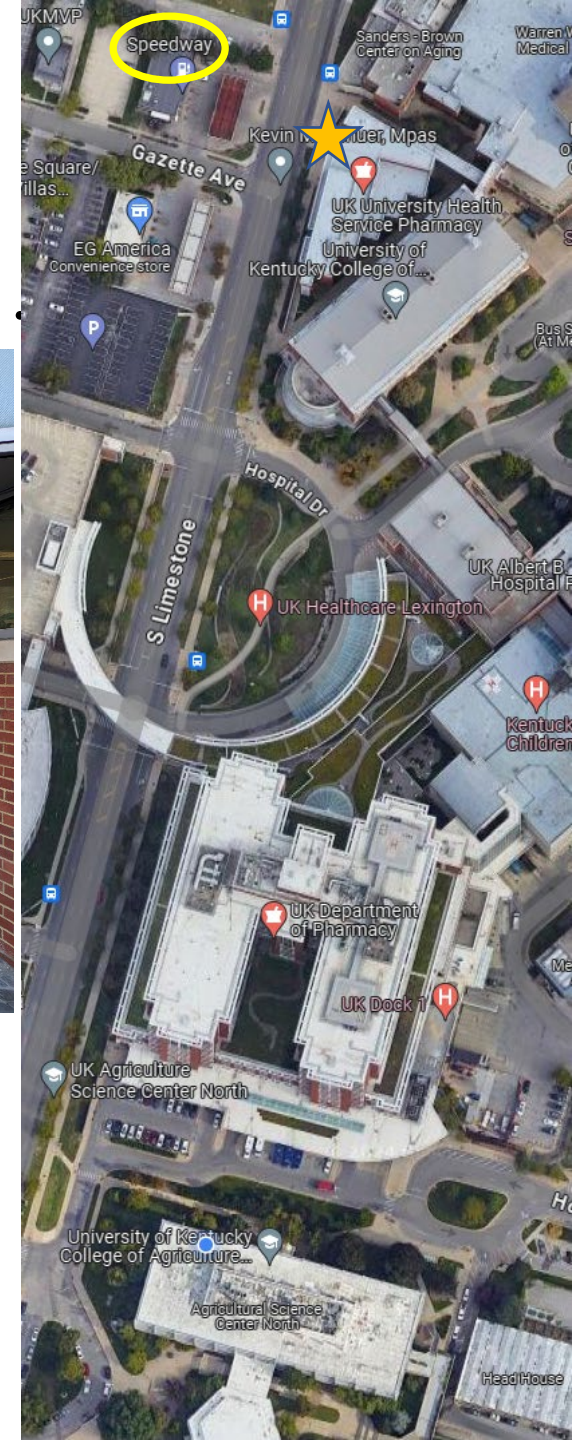
Included in Mandatory Fees



The University Health Services Fee gives you access to services and consultation at the University Student Health Clinic at Limestone and Rose.

If you get sick ...

... and need to see a doctor or nurse ...





After entering the building, you will see this stairway (left photo). Walk one level upstairs. When you arrive upstairs, you will see the registration desk in the photo below.



Remember:

In departmental business affairs (travel reporting etc.), you are considered a **UK employee**.

In the UK hospital, you are considered a **UK student!**

Parking Permits

Parking on Campus is a costly privilege.

Graduate Research Assistants are eligible for employee Permits

2024-2025 Annual Cost \$357 [8.5 months (9/1 - 5/15)]

Single-day tags (scratch-off permits) can be purchased through PTS. Cost varies by location and time of day (ca \$4.25 for an 'E' sticker).

Improper parking (including bicycles) incurs substantial fines or towing.

<https://transportation.uky.edu/park/studentpermits>



Bikes on Campus Must Show a Permit Obtained From PTS.

Online Registration

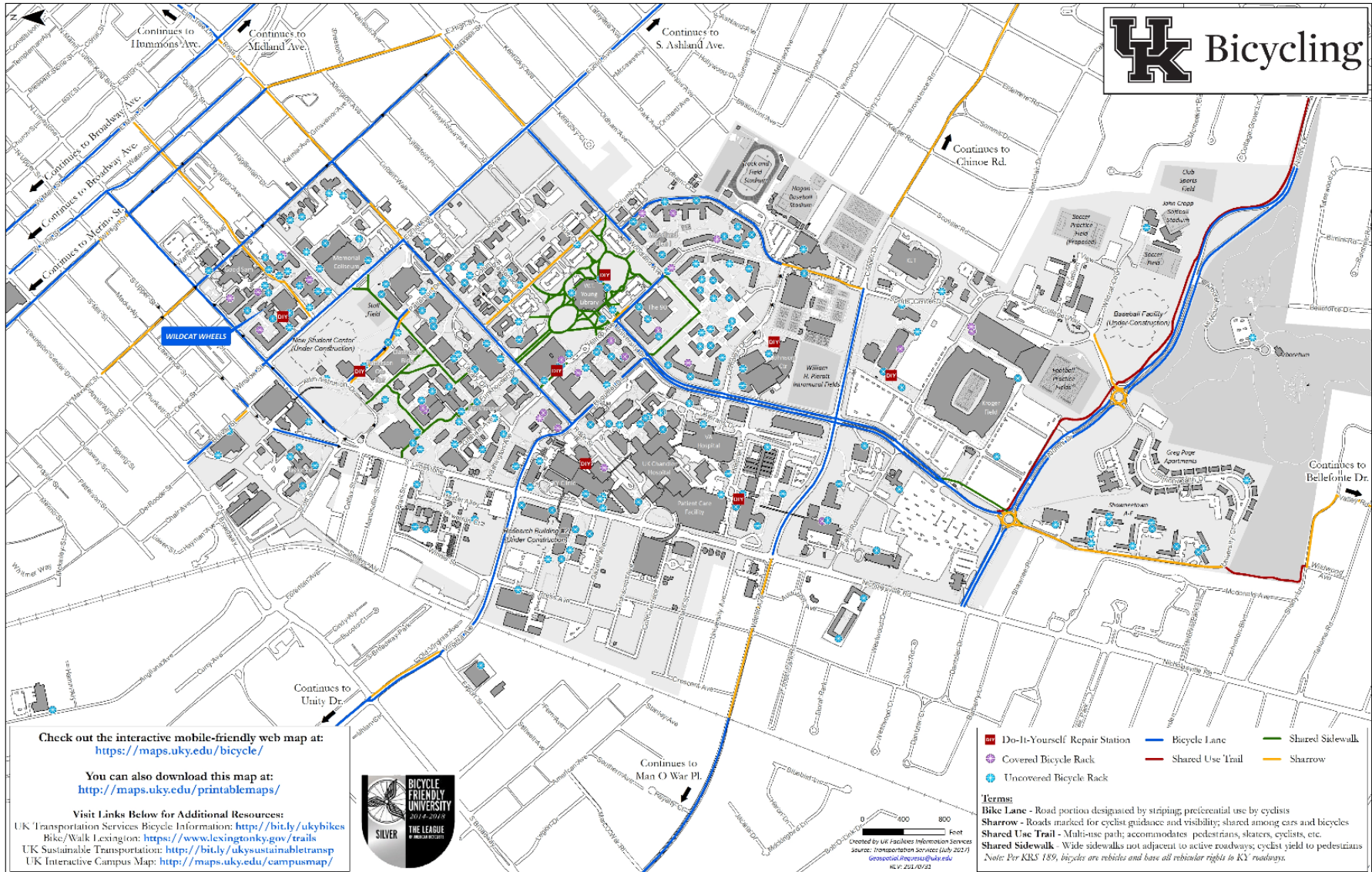
Bike permits (free) are available online. Sign into the <https://transportation.uky.edu/sustainable-transportation/bike-parking-registration>, you will see “Bicycle Parking”. Click on that and follow the directions on the next screen. This should take you to a page which allows you to select a bike permit. If you have more than one bike you wish to register, you may do so at this time. After completing the application, PTS will mail the permit to you.

Processing and delivery for online applications may take up to one week. Permits may also be obtained in person at the Press Avenue Garage (PS #6).



Bicycle Facilities

<https://transportation.uky.edu/bicycles-overview>



All UK faculty, staff, and students may ride LexTran for free by showing their employee or student ID.

UK's on-campus routes (the [Blue](#), [White](#), [Yellow](#), [Green](#) and [Orange](#) routes) operate on a continuous loop, providing riders with reliable and timely transportation. If you're looking to travel a little farther afield, consider UK's [Free Citywide Transit](#) program. This free service was developed through a partnership between Transportation Services and the Lexington Transit Authority (Lextran). It enables UK students and employees to travel all of Lextran's Lexington routes for free, simply by showing a University ID.

Transportation Services also offers several special shuttles throughout the year, including free transportation to and from the Blue Grass (LEX), Louisville (SDF) and Northern Kentucky/Cincinnati (CVG) airports for the Thanksgiving, winter and spring breaks. A separate partnership with BreakShuttle gives students yet another travel option during academic breaks. This charter bus service operates three routes (Atlanta, Chicago and Cleveland) serving more than 10 cities, all within a six-hour radius of UK.



A blurred background image of a library or study area. Two students are visible, one in the foreground looking down at a book or device, and another slightly behind. Bookshelves filled with books line the walls. The overall lighting is dim and has a blueish-purple tint.

Graduate Student Support

TA Opportunities

Course Sections/TA*	Offered	Number of
PLS 103 sections	Fall and Spring	multiple
PLS 104 sections	Fall and Spring	multiple
PLS 366 sections	Fall and Spring	multiple
ABT 495	Fall and Spring	1 section

*In order to fulfill departmental funding support requirement or to receive the \$1,000 stipend (if not departmentally-funded)

See Suzette Walling (s.walling@uky.edu) for more information about future opportunities.

Guide to TA Administration:

<https://gradschool.uky.edu/guide-ta-administration>

Support For Travel to Meetings and Competitions

2024-25

The IPSS Program has block funding to support student travel to attend regional and national meetings (up to \$700 per student depending on the level of participation).

Funds are limited and distributed on a first come/first served basis. Until Dec. 31, 2024, each IPSS graduate student can apply once for travel support. Depending on availability of remaining funds, students can apply for being supported for another travel after January 1, 2025.

A travel funding request form is posted on the IPSS website (<https://ipss.ca.uky.edu/current-students>). All requests should be submitted to the DGS, Ole Wendroth (owendroth@uky.edu).

IPSS Travel Award Request 2024/25

For Fiscal Year 2024/25 the IPSS Graduate Program will offer up to \$700 travel award grants for students presenting research as 1st authors at regional, national, and international meetings or attending workshops. Grants will be awarded on a first come-first served basis until the available funding is exhausted.

<input type="text"/>	<input type="text"/>
Student First Name	Student Last Name
<input type="text"/>	<input type="text"/>
Student Email	Student ID Number
<input type="text"/>	<input type="text"/>
Advisor Name	Advisor Email
<input type="text"/>	
Meeting/Conference Name or Research Travel Purpose	
<input type="text"/>	<input type="text"/>
Meeting/Conference Name or Research Travel Destination	Travel dates

Please check all that apply (if applicable):

- I will be presenting at the meeting/conference (*provide evidence of authorship*)
- I will be attending the meeting/conference
- I will be competing at the meeting/conference

<input type="text"/>	<input type="text"/>	<input type="text"/>
Total cost of travel	Total other funding (i.e. from faculty advisor)	Total funds requested from IPSS

Have you received funding from the IPSS program during this academic year? Yes No

<input type="text"/>	<input type="text"/>
Student Signature	Date

Approval from IPSS Program

Total Amount of Funding Awarded: <input type="text"/>	Account: <u>1012150020</u>
<input type="text"/>	SIO: <u>809000019205</u>
DGS or PSS Signature	Date

If you need assistance making travel arrangements or submitting documents in Concur, please reach out to (Zoë Womack at Zoe.Womack@uky.edu), PSB 105. Please remember, when you charge travel expenses upfront to your personal credit card, reimbursement will occur only after the travel event. By signing this form, the graduate student or their supervisor agree to complete the following expense form besides entering a CONCUR expense report and emailing the form to owendroth@uky.edu.

IPSS Travel and Blockfunding Expense Report for Fiscal Year 2025

Congratulations! You have been approved for receiving IPSS Travel or other Blockfunds in an amount of \$ [redacted].
After you have completed your expense report in CONCUR, please fill out this form.

In the table below, please list only those expenses that you charged to the Blockfunding account (1012150020, SiO: 809000019205). If you had to split expenses to charge them to different accounts, please list only the part of the expense that you charged to Blockfunding in the table below. After completion, please e-mail this form to the DGS (owendroth@uky.edu).

Completing and submitting this form are mandatory!

If you have purchased items for this trip that you need to report at different times, please follow the instructions below and check boxes accordingly.

Student's Name: [redacted]

Student's ID: [redacted]

Name of Conference and Trip destination: [redacted]

Purchase Date	Expense Item	Vendor	Procard or personal credit card Holder's Name	Amount
			Total of this report:	

Please check all that apply:

- This is the only form for this travel expense report
- Another travel expense form for the same travel with additional expenses will be submitted after the trip.
- A previous report form for this trip with a total amount of [redacted] has been submitted before.

[redacted]
Student's or Supervisor's signature

[redacted]
Date

Recipients of IPSS funds or those who report their IPSS expenses in CONCUR, are obliged to complete this form (besides submitting their CONCUR report).

Other IPSS Funding Support

GSA Travel Grant	Subsidized participation in the annual IPSS GSA Professional Development Trip
Symposium Award	Prizes for the best talks presented at the IPSS Research Symposium
Best New and Continuing Student	Prize for best overall performance by new or continuing MS and PhD students (Faculty nominated)
Service Award	Service as one of the IPSS GSA Officers

Research Activity Awards

Designed to stimulate research and scholarship, Research Activity Awards (RAA) represent five percent of annual indirect cost recovery for the college. Preference for these awards is given to faculty in early or transitional stages of their careers.

Guiding Principles for Research Activity Awards in the College of Agriculture:

- **build competitiveness in the peer-reviewed science world**
- **strengthen graduate programs (Graduate student support [equipment, supplies, professional travel to conduct research at distant sites]).**
- **encourage programs with high potential to have an impact on Kentucky's economy, society, or environment**

For More Information About College Research and Research Scholarships Availability Contact:

Tom Hanna

Assistant Director, Kentucky Agricultural Experiment Station
(tom.hanna@uky.edu)

Research Support Grant Program

This internal grant program is designed to enhance UK's research enterprise by assisting individual investigators in accelerating their research programs.

The program is offered annually, and will support the following:

1. Pilot studies to obtain preliminary data to enhance the competitiveness of extramural research grant applications, or for new creative research avenues.
2. Studies to obtain preliminary data requested by reviewers of an externally-submitted grant.

Awards will generally be from \$4,000 to \$20,000 (maximum allowed) and **costs should be commensurate with the proposed work**. Awards will be for one year only from the date of award. No more than one application per faculty member will be funded in a three-year period from the time of the award. If an investigator has received research support funding through other programs offered by the Office of Research or from other institutional grant support mechanisms (e.g., COBRE Pilot Projects, CCTS Pilot Projects, NSF EPSCoR, College of Medicine MVP Program, etc.), they are ineligible to compete for these funds for the same project (or in the same year). Investigators who have significant amounts of research funding or start-up funds will be less competitive for these grants.

Fellowships/Awards

- Fellowship opportunities are available through the Graduate School. These fellowships each have different purposes and eligibility criteria. All fellowships, unless otherwise noted, are DGS -nominated, which means your Director of Graduate Studies decides who from your department/program to nominate for the award. If you believe that you meet the criteria for a fellowship and are interested in being nominated, please contact your Director of Graduate Studies.
- Some of these awards are by self-nomination. Check the Graduate School Website for opportunities.
- For more information:
<https://gradschool.uky.edu/fellowships>

Join A Professional Society!

Benefits:

- ▶ Discounted registration for annual meetings
- ▶ Discounted prices on society monographs and journals
- ▶ Professional recognition and fellowship
- ▶ Potential for travel grants and fellowships
- ▶ Job placement services
- ▶ Early career training and advice
- ▶ Participate in Science Advocacy for your discipline

Examples:



Graduate Student Progress



Graduate Students cannot receive a grade of 'D.' Their grading scale is 'A,B,C,E.'

After 12 hours of accumulated graduate credit, a semester with a cumulative GPA < 3.0 will result in academic probation and loss of tuition scholarships from the Graduate School.

Two consecutive semesters with a cumulative GPA < 3.0 results in termination from the graduate program.

You must have a cumulative GPA ≥ 3.0 to graduate.

Annual Review of Progress

The Graduate School requires that progress toward completion of your graduate program is reviewed by your advisory committee and the DGS each year.

Annual Review of Progress is due on 28 February.

Renewal of GSAS contracts on July 1 depends on “good” progress.
Notification should occur by 30 April

The form of the Annual Review of Progress differs among the different graduate programs.

Annual Review of Progress

- By February 28 of each year all IPSS Graduate Students will provide a progress report to the DGS
- The progress report will consist of a list of milestones achieved, advisor evaluation, CV, and narrative statements
- The progress report must be reviewed and signed by the research advisor and student
- Failure to turn in the progress report has consequences

**Part 2 - Program Milestones (completed by student)
(Leave milestone blank if not applicable)**

Milestone	Date
Started program	
Outlined program of study (should complete by end of first term of study)	
Formed advisory committee (Should complete by end of second term of study)	
Presented research proposal (Should present by end of second term of study)	
Completed required classes	
Scheduled qualifying examination (PhD only) (Should occur by the end of the 4 th term of study)	
Passed qualifying examination (PhD only)	
Scheduled final examination (Normative time for M.S. students is 2 years; PhD students 3 years)	
Submitted research paper(s)	

Assessment of Learning Outcomes

At various stages of your UK career, you will be asked to help assess our effectiveness in achieving and improving the “Learning Outcomes” of our graduate programs.

We have four learning outcomes:

1. Knowledge of your field.
2. Skills supporting your knowledge.
3. Ability to communicate.
4. Professional attributes.



You will provide most of this information in the annual CV of your
Progress Report

The Graduate School Provides Various
Check Sheets For Students To track Their
Progress.

These Are Particularly Important To
Follow During the Semester in Which
You Intend to Graduate.

[https://gradschool.uky.edu/sites/gradschool.uky.edu/files/CheckSheet Doctoral Students%20July%202023.pdf](https://gradschool.uky.edu/sites/gradschool.uky.edu/files/CheckSheet%20Doctoral%20Students%20July%202023.pdf)

Check Sheet for Doctoral Students

One year prior to qualifying exam:

Formation of advisory committee: _____ (Date Submitted)

https://ris.uky.edu/cfdocs/gs/DoctoralCommittee/Selection_Screen.cfm

The advisory committee has a core of four members. This core must include a minimum of two faculty members from the graduate program (with one being the major professor as chair or co-chair), and one representative from outside the graduate program. All members of the core must be members of the Graduate Faculty of the University of Kentucky and three (including the major professor) must possess full Graduate Faculty status.

A minimum of two weeks prior to qualifying exam date:

Qualifying Examination Request: _____ (Date Submitted)

https://ris.uky.edu/cfdocs/gs/DoctoralCommittee/Selection_Screen.cfm

Conduct a review of your transcript to ensure the following:

- You have completed the equivalent of 2 years of residency (36 hours for most programs, but some programs require more than 36 hours). On the transcript, earned hours (EHRS) are counted toward the degree. If you have less than 36 EHRS, contact your DGS.

Use the above link to see the complete check sheet.

https://gradschool.uky.edu/sites/gradschool.uky.edu/files/CheckSheet_MastersThesisStudentsPlanA.pdf

Check sheet for Master's Thesis Students (Plan A)

The term you intend to graduate:

Application for Degree: _____ (Date Submitted)

<http://myuk.uky.edu/> Click on Student Services / myRecords / Apply for Degree

Due the term in which you intend to graduate:

- May degree – April 1
- August degree – April 1
- December degree – November 1

If you submitted a degree application for a previous term, but did not graduate you must complete a new degree application for the current term.

A minimum of 2 weeks prior to examination:

Request for Final Master's Examination: _____ (Date Submitted)

https://ris.uky.edu/cfdocs/gs/MastersCommittee/Student/Selection_Screen.cfm

Conduct a review of your transcript and Degree Audit if available for your program to ensure the following:

- You have completed or are in progress to complete the required number of earned hours for the degree in your program of study and all additional degree requirements are being met.
You do not have any missing or "I" grades prior to the current semester.
- Your GPA is 3.00 or higher. Anything still 'red' in the audit during the final semester will need be resolved. Contact DGS/advisor as soon as possible.

Use the above link to see the complete check sheet.

https://gradschool.uky.edu/sites/gradschool.uky.edu/files/CheckSheet_MastersNon-thesisStudentsPlanB.pdf

Check sheet for Master's Non-Thesis Students (Plan B)

The term you intend to graduate:

Application for Degree: _____ (Date Submitted)
<http://myuk.uky.edu/> Click on Student Services / myRecords / Apply for Degree

Due the term in which you intend to graduate:

- May degree – April 1
- August degree – April 1
- December degree – November 1

If you submitted a degree application for a previous term, but did not graduate you must complete a new degree application for the current term.

A minimum of 2 weeks prior to examination:

Request for Final Master's Examination: _____ (Date Submitted)
https://ris.uky.edu/cfdocs/gs/MastersCommittee/Student/Selection_Screen.cfm

Conduct a review of your transcript and Degree Audit if available for your program to ensure the following:

- You have completed or are in progress to complete the required number of earned hours for the degree in your program of study and all additional degree requirements are being met.

Use the above link to see the complete check sheet.

Intellectual Properties

All data, discoveries, patents, etc., generated during the tenure in research assistantship or graduate programs are assigned to the University of Kentucky.

Authorship of publications based on your research is a critical issue. You are expected to submit at least one manuscript for publication prior to your final exam or defense. Your publication benefits you, your advisor, our college and the university. It becomes part of “Digital Measures”.

Documentation is required for “discovery.”

Backup of research data is critical. Fires happen (even in the field). Floods happen (even in a building). Send copies of your data to your advisor without being asked.



Graduate School Professional Development Support

The following is a listing of the Graduate Certificates To search exclusively for online programs, visit the [UK Online portal](#).

[Advanced Materials Characterization \(online\)](#)
[Anatomical Sciences](#)
[Applied Environmental & Sustainability Studies \(online\)](#)
[Applied Nutrition & Culinary Medicine \(online\)](#)
[Applied Statistics \(online\)](#)
[Assistive & Rehabilitation technology \(online\)](#)
[Assistive and Rehabilitation Technology](#)
[Autism Spectrum Disorder](#)
[Baroque Trumpet](#)
[Biostatistics](#)
[Child Welfare Practice](#)
[Clinical & Translational Science](#)
[Clinical Social Work \(online\)](#)
[Cognitive Science](#)
[College Teaching & Learning](#)
[College, Career, and Civic Life](#)
[Computational Fluid Dynamics](#)
[Developmental Disabilities](#)
[Developmental Disabilities \(online\)](#)
[Digital Mapping \(online\)](#)
[Distance Education \(online\)](#)
[Distance Education for EDC](#)
[Distance Education for EDS](#)
[Diversity & Inclusion \(online\)](#)
[Engineering in Healthcare](#)
[Eurhythmics](#)
[Executive Educational Leadership \(online\)](#)
[Explosives & Blasting \(online\)](#)

[Family & Consumer Sciences \(online\)](#)
[Fundraising & Development \(online\)](#)
[Gender & Women's Studies](#)
[General Radiological Medical Physics](#)
[Gerontology](#)
[Global Health](#)
[Health Coaching](#)
[Health Communication](#)
[High Performance Coaching](#)
[Historic Preservation](#)
[Historic Preservation \(online\)](#)
[Human Technology Interaction](#)
[Improving Healthcare Value](#)
[Information Communication Technology \(online\)](#)
[Instructional Coaching](#)
[Instructional Coaching \(online\)](#)
[Instructional Communication](#)
[Interdisciplinary Early Childhood Education - Initial Certification \(online\)](#)
[International Education](#)
[Latin American, Caribbean, and Latino Studies](#)
[Latin Studies](#)
[Leadership for Deeper Learning](#)
[Leadership for Deeper Learning \(online\)](#)
[Lean Systems](#)
[Lean Systems \(online\)](#)
[Liberal Studies \(online\)](#)
[Manufacturing Systems Engineering \(online\)](#)
[Military Behavioral Health](#)
[Musculoskeletal Injury Management](#)
[Music Theory Pedagogy](#)
[Next Generation Teaching & Learning](#)
[Nonprofit Management](#)
[Orff Schulwerk](#)

[Physiology Teaching](#)
[Positive Youth Development \(online\)](#)
[Post Graduate A.P.R.N. Certificate \(online\)](#)
[Power & Energy](#)
[Power Systems \(online\)](#)
[Professional & Technical Writing](#)
[Professional & Technical Writing \(online\)](#)
[Public Financial Management \(online\)](#)
[Public Health Management](#)
[Rehabilitation Counseling](#)
[Research Methods in Education](#)
[Research Methods in Education \(online\)](#)
[Risk Sciences \(online\)](#)
[School Social Work](#)
[School Technology Leadership \(online\)](#)
[Social Theory](#)
[Sport, Fitness, & Recreation Management \(online\)](#)
[Stream & Watershed Science](#)
[Structural Engineering \(online\)](#)
[Teaching English as a Second Language](#)
[Teaching in Culturally and Linguistically Diverse Classrooms Telehealth \(online\)](#)
[Tobacco Treatment Specialist Training \(online\)](#)
[Vocal Pedagogy](#)



GS Professional Enhancement (and list of GSPE Staff with photos)

<https://gradschool.uky.edu/professional-enhancement>

See Calendar of Events at the above website

Career Resources:

<https://gradschool.uky.edu/career-resources>



Home / Professional Enhancement / Professional Enhancement

Professional Enhancement

Professional Enhancement

Preparing Future Faculty

Graduate Certificate in College Teaching & Learning (GCCTL)

GradLive!

New Graduate Student Orientation

Grad Student Pathways

Career Resources

Professional Enhancement

- About Us
- Calendar of Events
- Graduate Student Success Pathways
- Our Programs & Services
 - Fulfilling Profession
 - Impactful Research
 - Transformative Teaching
 - Holistic Wellness
- Advocacy & Partnerships
- Meet the Staff

About Us

The Office of Graduate Student Professional Enhancement (GSPE) fosters scholarly and professional growth, pedagogical and career success, and holistic wellbeing. As a centralized resource, we offer a variety of in-person and online programs and services, guided by professionals with years of experience in graduate education and enriched by a broad spectrum



Home / Professional Enhancement / GradLive! / GradTeachLive!

Professional
Enhancement



GradTeachLive!



GradTeach LIVE!

- [About](#)
- [Prizes](#)
- [Rules & Judging Criteria](#)
- [Registration, Dates, & Deadlines](#)
- [This Year's Competitors](#)
- [This Year's Winners](#)
- [Videos of Previous Winners](#)

About

Teaching Philosophy in Practice

<https://gradschool.uky.edu/gradteachlive>



Home / Professional Enhancement / GradLive! / UK GradResearch Live!

Professional
Enhancement



UK GradResearch Live!



- About UK GradResearch Live!
- Timeline
- Tracks & Prizes
- Rules & Submission
- About 3MT
- Congratulations to our 2022 Winners

<https://gradschool.uky.edu/uk-gradresearch-live>



Home / Professional Enhancement / Graduate Certificate in College Teaching & Learning

Professional Enhancement

Professional Enhancement

Resources for Teaching Assistants

Preparing Future Faculty

Graduate Certificate in College Teaching & Learning (GCCTL)

GradLive!

New Graduate Student Orientation

Grad Student Pathway

Career Resources

Graduate Certificate in College Teaching & Learning

NOTE: Please apply via the Graduate School's [online admissions application](#). **NOTE:** The PDF application, found [here](#), is also required and should be completed, scanned, and uploaded during the online application process. Please include any other required documents (CV and unofficial copy of your graduate transcript) in this single pdf file. If you are currently a graduate student at UK, you will need to create a new account to apply for the certificate in AY using an email address that is different from the one you originally used to apply.

The Graduate Certificate in College Teaching and Learning provides a coherent, integrated approach to helping graduate students, postdoctoral scholars, current faculty, and others develop and document the skills needed as part of conscientious preparation for the full range of faculty responsibilities at a range of institutions of higher education.

This 12-credit-hour Certificate, including a required 3-credit-hour supervised practicum experience, provides a rich integration of theory and practice and provides participants with tangible documentation of their expertise in college teaching and learning. The Certificate is flexible so as to be accessible to participants from a wide range of disciplines. It uses departmental courses related to college teaching and learning as well as centralized courses.

The Certificate builds on the highly successful Preparing Future Faculty program, a collaborative effort between UK and Kentucky institutions including Asbury College, Berea College, Bluegrass Community and Technical College, Centre College, Eastern Kentucky University, Georgetown College, Kentucky State University, Lindsey Wilson College, Midway College, and Transylvania University.

The Certificate will produce graduates who are highly competitive in the job market in higher education, are quick starters as faculty members, and who can provide leadership in higher education.

Participants who are also pursuing graduate degrees are urged to apply for admission to the Certificate early in their course of graduate studies.

[GCCTL Curriculum](#)

[GCCTL Benefits](#)

[GCCTL Cost](#)

<https://gradschool.uky.edu/graduate-certificate-college-teaching-learning>

Integrated Plant and Soil Sciences Website

<http://ipss.ca.uky.edu/>

This site is to support IPSS graduate students through common FAQs, links, announcements, awards, updates, etc.

Contact Zoë Womack (Zoe.Womack@uky.edu) with information

Questions?

Ole Wendroth
DGS-IPSS
Professor of Soil Physics
Ag. Sci. North N-122M/
PSB 323
Office: 859-257-4768
owendroth@uky.edu



College Graduate Student and Postdoctoral Scholar Fall 2024 Welcome Meeting on Friday, August 23, 2024, noon to 2 PM.

11:30 a.m. – 2:15 p.m.

- ⊙ On-site Registration outside Seay Auditorium in Lobby
- ⊙ Lunch available for pick-up, Seay Lobby

12:15 Welcome Dr. Agouridis –

Graduate School
Graduate Student Congress
Statistical Consulting
International Center
Graduate School Programs
Door Prizes and T-shirts

Student Health Insurance
Diversity Programs
Civil Rights Overview
Career Support
Other Services

**...and now, it's lunch time!
Photos being taken!**

